

HONORHEALTH®

Foundation



*we honor*  
**PHILANTHROPY**

**2021 ANNUAL REPORT**

# *we honor* RELATIONSHIPS

---

“The most useful and influential people in America are those who take the deepest interest in institutions that exist for the purpose of making the world better.” – **Booker T. Washington**

## OUR VISION

To set the standard for excellence in relationship-based fundraising

## OUR MISSION

To strengthen the mission of HonorHealth through philanthropy

## YOUR RESPONSE:

**5,596 donors made \$60.4 million in gifts and commitments to support priority programs:**

- Desert Mission Endowment
- HonorHealth Research & Innovation Institute
- Greatest Needs Fund
- Cardiovascular Center of Excellence
- Patient Assistance Endowment
- Integrative Medicine primary care practices

*and many more*

---

# WE HONOR *Leadership*

HonorHealth Foundation connects people with the desire to make a transformational difference in healthcare. Some come from the community and step forward with philanthropic gifts.

Some are HonorHealth leaders, elite physicians or scientists pursuing innovative solutions to healthcare's most pressing challenges.

Others are compassionate nurses who ensure each patient receives a daily dose of caring.

Together, we are a team standing ready to take on all the healthcare battles that come our way.



## A Message from our Board Chair

Thanks to our generous donors, we have much to be proud of—once again HonorHealth Foundation exceeded its fundraising goals and ended the year with a record-breaking **\$60.4 million in gifts and commitments**.

I'm especially proud that for the third consecutive year, every member of our board of trustees is counted among our loyal donor base.

Your investment has helped advance clinical research, expand medical services, support patients who lack resources and serve the most vulnerable in our community. And we are better for your generosity.

In another year where we faced the significant challenges of an ongoing pandemic, we proved that this community cares about healthcare.

With sincere thanks,

**David J. Watson**  
Chair, Board of Trustees, 2020-22



## A Message from our President & CEO

When I consider what our donors, patients, staff and community have endured throughout the last two years, I am overwhelmed with gratitude for your generosity to HonorHealth Foundation. Your gifts saved the lives of stroke patients, protected staff and patients from infection, placed us at the forefront of cardiovascular care in the Southwest and so much more.

As we all know, philanthropy has a direct impact on the quality of care available in our community. My vision has always been to build a philanthropic community that would elevate healthcare to address the immense challenges of our time. Now we see that vision coming alive.

Philanthropy is so much more than a financial gift. It is the pathway to expert care that gives people more time—more quality time—with those they love. Thank you for joining us in this vital mission.

With gratitude,

**Jared A. Langkilde**  
President & CEO HonorHealth Foundation

## BOARD OF TRUSTEES

### OFFICERS

David Watson  
*Chair*

Laurie A. Florkiewicz  
*Vice Chair*

Judith G. Wolf, PhD  
*Secretary*

James M. Reed  
*Treasurer*

Robert Lavinia

John C. Lucking

Frederick A. Lynn

Murray Manaster

Alison P. McAdam

Cheryl R. Melocik

Eliot A. Minsker

Shaheen P. Neil

Michael G. Nicholas

Stephen J. O'Neill

John W. (Bill) Pihl

Nancy Harris Robertson

Richard G. Russell

Jeffrey G. Schlein

Jerre L. Stead

Mary Joy Stead

Sally Tryhus

Robert H. Tomlinson

Kevin S. Veale

Judith A. Ward

*Trustee for Life:*

Michael D. Greenbaum

*Ex Officio:*

Todd LaPorte, CEO

HonorHealth

*Legacy Trustee:*

Virginia G. Piper

## TRUSTEE MEMBERS

Timothy W. Barton

Steven B. Crystal

Richard R. Donnelley

Carter W. Emerson

Curt R. Feuer

Sue Fletcher

E.K. Gaylor II

Rodney Glassman

James E. Graber

Howard C. Katz

C. Dennis Knight



*we honor* **TRANSFORMATION**

Your gifts are transforming the  
**HonorHealth Cardiovascular  
 Center of Excellence**

Through the generosity of our faithful donors, heart patients now have access to new technologies and resources that lead to comprehensive care and better outcomes.

■ **The Alice and Charles W. Palmer Cardiovascular Specialty Suite** features two procedure labs. Revolutionary technology and the flexibility to accommodate both traditional open-chest surgery and today's minimally invasive procedures for optimal diagnosis and treatment of cardiac, vascular and thoracic conditions. The new Electrophysiology (EP) Lab meets the growing need for procedures to treat arrhythmia, among the most common heart problems. Here, clinicians use remotely guided catheters with the greatest precision to destroy the tissue causing the abnormal heart rhythms. We can now treat more patients with greater safety and efficacy.

■ **The Farley Family Charitable Fund Cardiodiagnostics Standardization Initiative** helped standardize echocardiogram technology across the system's six hospitals. This technology often gives doctors the first insight into a heart patient's condition. Consistent equipment and training improves efficiency and accuracy, so every HonorHealth cardiovascular patient receives optimal care.

**In 1 year, HonorHealth performs:**

**46,000**  
ELECTROCARDIOGRAMS

**9,500**  
ECHOCARDIOGRAMS

**900+**  
STRESS TESTS

#1	8.5%	5X	1 in 3
Heart disease is the leading cause of death in Arizona	Adults with undiagnosed cardiovascular disease	Increased risk of stroke with associated with arrhythmias	Adults with high blood pressure

# That Could Have Been Me

## SUE FLETCHER

Last summer, a woman wasn't feeling quite right. And, as many women do, she ignored her symptoms of fatigue and discomfort. Not long after, she suffered a fatal heart attack.

"That could have been me," Sue Fletcher admits as she mourns her friend.

Plus, with a family history of heart disease, Sue was not about to ignore her own symptoms of fatigue and shortness of breath. She booked a cardiology appointment at Cleveland Clinic while visiting family in Ohio.

Doctors there eventually recommended a complex bypass surgery. But something about it didn't sit quite right with Sue, who returned to HonorHealth and Dr. Maulik Shah.

"I'm so glad I did, because I was running out of time. When Dr. Shah reviewed my tests, he could immediately see the problem. He was concerned that we move quickly and recommended one or two stents, a much simpler procedure," Sue explains.

Less than a year later and Sue is grateful to be back to the active lifestyle she loves. She has also become an advocate for women to pay attention to their symptoms; her generous gift to the HonorHealth Cardiovascular Center of Excellence will help share that message and provide the level of care this community needs.

"If you have been touched by someone who has heart disease, as I have, in my brother, father, husband, friend, and now myself, you'd understand how important it is that we give what we can to give researchers and doctors new ways to treat heart disease."



"Creating the Cardiovascular Center of Excellence for our community has been a longtime vision. Making this vision a reality directly translates to saving more lives and healing more hearts."

— MAULIK G. SHAH, MD, FACC, FSCAI  
Executive Director and Chief of Complex Interdisciplinary Medicine, HonorHealth Cardiovascular Center of Excellence



## HONORHEALTH CARDIOVASCULAR CENTER OF EXCELLENCE

**The vision has been cast. The foundation has been laid.**

One in every four Arizona adults is touched by heart disease. Now is the time to meet the critical need this represents. Our nationally recognized experts span the spectrum of cardiovascular disease, collaborating to develop new approaches to treatment, management and even prevention.

In 2022 and beyond, HonorHealth will expand the Cardiovascular Center of Excellence to establish a destination for comprehensive, multi-disciplinary heart care. Plans are underway to bring all heart and vascular services into one new tower at HonorHealth Scottsdale Shea Medical Center and expand service to include:

- Women's heart program
- Thoracic surgery
- Lung cancer screening
- Cardiovascular radiation safety initiatives

In addition, long-term plans call for an expansion at HonorHealth Deer Valley Medical Center to better serve the growing needs of the West Valley.

"Innovation has enabled us to replace many open chest, open heart surgeries with interventional techniques. It requires an investment in the right team, the right technology, the right environment but we believe the next quantum leap forward in cardiovascular care could originate right here at HonorHealth."

— DAVID G. RIZIK, MD, MSCAI, FACC  
Chief, Complex Interventional Cardiology  
HonorHealth Cardiovascular Center of Excellence





*we honor* **BREAKTHROUGHS**

**HonorHealth Research and Innovation Institute**

**Accelerating Breakthroughs and Fueling New Hope**

Through the generosity of donor investments, HonorHealth Research and Innovation Institute (HRI<sup>2</sup>) is shaping the future of medicine to benefit patients locally and globally.

Leading-edge research, access to clinical trials and expert, compassionate care transform patient lives through HRI<sup>2</sup>'s groundbreaking treatments. Home to some of the nation's most distinguished physician scientists, HRI<sup>2</sup> has an impressive record of developing new drugs and novel medical technologies.

From cancer and cardiovascular disease to neurological conditions, traumatic injuries and more, HRI<sup>2</sup> is improving treatments for patients who face rare or serious health conditions, often before they are widely available.

**“Our patients are depending on us to develop faster, more advanced treatment options so that we can stay ahead of their disease. This gives patients more time with family and often improves quality of life. This is a unique care-to-cure environment, where breakthrough research and first-in-human studies or new, innovative medical devices, improve patient outcomes and provide real hope.”**

**—MARK SLATER, PhD**  
*Vice President of Research and HRI<sup>2</sup> Executive Director*

**142**

Oncology studies in pancreatic cancer, uveal melanoma, lymphoma, CAR-T immunotherapy, Natural Killer cells, multiple myeloma

**110**

SHARP studies in neuroscience, trauma, cardiovascular, pulmonary, COVID-19, Bariatric/GI

**75+**

publications in peer-reviewed journals, contributing to medical knowledge



**“We are moving into an era of preventative medicine and away from reactionary medicine. By utilizing a multidisciplinary team, our Early Detection Program is offering a comprehensive program to detect pancreatic cancer early. We hope that with the development of newer molecular techniques, we will be able to bring this to people who may be at risk for other cancers and diseases.”**

**—ERKUT BORAZANCI, MD, MS**

## Drug Development Scholars Push the Boundaries of Treatment for Rare Melanoma

Uveal melanoma is a rare cancer of the eye that when left untreated to metastasize, is usually fatal. As with many rare cancers, getting a timely diagnosis and expert treatment can be a challenge.

Through the generosity of Laurie and Drew Brown and the Brown Family Fund for Arizona’s Future, the Institute’s Drug Development Scholarship program is training the next generation of cancer researchers, preparing them to push the boundaries of conditions such as uveal melanoma—and give patients new options for care. In fact, HRI<sup>2</sup> is one of the few sites in the Southwest with a program in this rare cancer.

In his role as HRI<sup>2</sup>’s Drug Development Scholar, Justin Moser, MD, now an Associate Clinical Investigator, developed a novel blood-based biomarker for detecting uveal melanoma and monitoring patients with the cancer. He also worked with oncology-trained ophthalmologists in the Valley to grow a comprehensive uveal melanoma program that reduces time to diagnosis and provides complete, expert care for patients with all stages of uveal melanoma.

Dr. Gehan Botrus now serves as the HRI<sup>2</sup> Drug Development Scholar, with a particular focus on minorities and health disparities in oncology and will continue the work started by Dr. Moser. Through these collaborative research programs and clinical trials, HRI<sup>2</sup> is finding new and better treatments that give patients—even those with rare cancers—new hope.



## Innovative Grand Slam Clinical Trial Posts a Win in the Fight Against Pancreatic Cancer

Stage IV pancreatic cancer. The diagnosis is terrifying for its one percent survival rate.

When Marybeth learned of her pancreatic cancer in August 2020, she turned to HRI<sup>2</sup> in search of hope. An innovative “Grand Slam” clinical trial was showing promise, shrinking tumors substantially in 84 percent of patients in the study.

After meeting with the HRI<sup>2</sup> expert team, she qualified for the trial and began the grand slam: a regimen of five drugs, including three chemotherapy agents, a drug to help the immune system attack cancer cells and a form of vitamin D.

After six months, Marybeth had responded so well she was placed on a maintenance program in early 2021.

“HonorHealth Research Institute saved my life,” says Marybeth gratefully. “Pancreatic cancer is a terrible and gloomy diagnosis. But HRI<sup>2</sup> gave me hope when other medical institutions didn’t. Their team supported me in so many ways—physically and emotionally—and it’s meant more to me than I can say.”

Today, Marybeth is busy swimming five to six miles weekly and planning her wedding. “In the not too distant past, I wouldn’t have been here to do any of that,” she says.

**“HonorHealth Research and Innovation Institute is increasingly a destination and beacon of hope for those facing rare cancers. Advances against them cannot be made until someone makes them a priority. Powered by generosity, we are transforming and saving the lives of patients who typically have had little—if any—hope.”**

**—MICHAEL S. GORDON, MD**  
Chief Medical Officer, HRI<sup>2</sup>



*Thank you*

Thanks to donor support of the Cellular Therapy Research Program, HRI<sup>2</sup> initiated a CAR-T multiple myeloma trial resulting in the near-term approval of an agent in this rare hematologic disorder, as well as opening the door for several new multiple myeloma-based cellular trials. This has made HRI<sup>2</sup> a leading destination for those fighting rare and refractory cancers.



Your generous gifts to  
the **Greatest Needs Fund**  
have changed the lives  
of patients, staff and our  
community during yet  
another challenging year.

*we honor* **IMPACT**

Every patient's experience is enhanced because of philanthropy. So gifts to the Greatest Needs Fund not only give HonorHealth the flexibility to direct funds where they are needed most, they are making great care possible for patients and families in our community. Perhaps even for yourself or your loved ones.

**Here are a few ways your gift to the Greatest Needs Fund made an impact**

As an unrestricted contribution, gifts to the Greatest Need Fund in 2021 were directed where they could do the most good or meet a need that otherwise may go unfulfilled:

**Safeguard** our patients, staff and community through the long COVID-19 pandemic. The fund helped provide personal protective equipment, fever scanners and germ-zapping robots that kill the virus in rooms and on equipment. It also helped us purchase vaccine freezers and get vaccination sites up quickly, then install containment panels at urgent care and emergency department waiting areas, protecting patients and staff from infection.

supply nutritious meals for staff working long hours during each spike in COVID cases.

**Expand** procedural rooms such as heart catheterization labs and operating rooms and upgrade patient rooms.

**Advance** exceptional care and provide services that surround vulnerable patients with support even beyond their hospital stay.

**Educate**, cross-train and sustain our front-line healthcare workers and support these heroes facing a financial crisis through no fault of their own. Your donations also helped

**Invest** in innovative technology and training including telemedicine, home monitoring equipment and even telehealth robots to quickly care for stroke patients.





## COVID-19 Vaccines

After nearly a year of watching the world bend to COVID-19, the first round of vaccines were ready for the public in January 2021. Many donors, including the City of Scottsdale, provided funding for the freezers to keep the first vaccines at the required temperature. Their gifts help ensure the safety of our front-line healthcare workers and provide uninterrupted expert care to vulnerable patients.



## Erika's Angel Watch

Introducing family and friends is a precious part of welcoming a newborn into the world. But for preemies with health challenges, "home" is the HonorHealth Scottsdale Shea Neonatal Intensive Care Unit (NICU), sometimes for months.

Through the generosity of **Erika and Roger Greaves**, the NICU now features a high-tech system with a high-touch purpose.

**Erika's Angel Watch** offers a 24/7 live video feed of the NICU babies. Parents decide who has access to the secure phone app, but once approved, family and friends can visit virtually any time.

"Especially during COVID visitor restrictions, families might have missed out on those joyful moments of meeting baby for the first time," says Mary Luster, Sr. Clinical Director for pediatrics. "Erika's Angel Watch provides peace of mind, a stronger sense of bonding and gives family and friends the opportunity to see baby's progress through their NICU stay."

The Greaves consider it a privilege to support these little ones who will build the future for our world.

"I've had so much given to me in blessings and now it's time to give back," says Erika.



## THOMPSON PEAK EMERGENCY DEPARTMENT EXPANSION

Major additions to the HonorHealth Thompson Peak campus were made possible by the grateful hearts of two very special donor couples.

A transformational gift established the **Craig and Karen Stull Emergency Department at HonorHealth Scottsdale Thompson Peak Medical Center**, which opened in May 2021. Their gift will expand examination rooms for expedited care, add a negative-pressure room and new triage rooms and create a centralized care station for physicians and nurses to collaborate. Their gift allows Thompson Peak to serve the increase in emergency and surgical patients without delay or over-crowding.

"As a grateful patient, I know the value of comprehensive and compassionate healthcare," said Craig Stull. "Advanced emergency medicine is something I believe our growing and demographically diverse community needs, so my investment is in healthcare but also people—to help save more lives."



With a 21-year legacy of philanthropy, Chuck and Alice Palmer continue to transform healthcare for their community.

Their gift for Thompson Peak helped to purchase new outpatient therapy equipment for patients recovering from stroke, surgery or injury—or anyone with balance issues. Today, a Gait and Safety Lift and Medi-Touch BalanceTutor reduce the risk of falling for patients relearning how to walk following a stroke or serious injury.

"My donations come from being a grateful patient who was very impressed with the care and attention the staff gave to me," commented Chuck Palmer. "Alice and I wanted to fund additional equipment to help others on their healing journey."

The impact of gifts to the Greatest Needs Fund is felt throughout the hospital system and our community.

*we honor* **COMPASSION**

At any given time, HonorHealth staff are assisting 20 patients who are ready for discharge but cannot afford the post-hospital care or support they need.

**Patient Assistance Endowment**

# Making all the difference for those in need

Every day, HonorHealth social workers, care managers, nurses and physicians prepare patients for hospital discharge who need financial assistance because they can't afford the cost of post-hospital care their doctor recommends. Or they lack financial resources for housing, food or transportation that makes recovery even harder.

900,000

Arizonans with no medical insurance, putting their health at risk

14%

Arizona households that struggle with having enough food

20%

Increase in patient requests for financial assistance last year

**PATIENT ASSISTANCE ENDOWMENT FUNDS:**

**Bridge the insurance gap**

**In-home care**

**Personal medical equipment**

**Physical therapy & rehabilitation**

**Medicine**

**Transportation to appointments**

**Nutritious food**

**Other resources recommended by the patient's physician**



## The Ellen and Howard Katz Family Patient Assistance Endowment

“What happens to people when they finish their hospital stay but they lack the resources to continue to support their ongoing health?”

This single significant question troubled Howard Katz, a member of the Board of Trustees, who then started to research how to help patients in need to follow their doctor’s orders and return to good health. Who followed them through the healing process and helped them find the necessary resources?

The answer is complex. HonorHealth social workers and case managers identify patients with these needs and either connect them to community resources or provide direct support. The never-ending need for funds to cover the expenses led Howard and his wife Ellen to establish an endowment to ensure the HonorHealth Patient Assistance Fund could meet these unique needs, so no one falls through the cracks.

The Ellen and Howard Katz Family Patient Assistance Endowment eases the financial burden of post-hospital care for countless patients who are uninsured, underinsured or living below the federal poverty level—patients at greatest risk of falling through the cracks. A grant from the Patient Assistance Fund helps meet their medical needs to return to their best health.

“When a vulnerable patient is cared for in the hospital, they receive excellent care. But when they are discharged, they are at risk. They may not have the means to follow their doctors’ orders for follow-up care. They may be elderly and alone, with no one to make sure they continue to get the follow-up care they need. They may lack nutritious food or access to medicine or even the simplest resources that could improve their health.”

—HOWARD KATZ

*Philanthropist and 2021 Honor Ball Honoree*

*we honor* **SERVICE**

# Desert Mission

HonorHealth Desert Mission traces its roots to 1927, a time when its volunteers brought food and medical supplies to people who camped north of Phoenix city limits, hoping the dry desert air would cure their respiratory ailments.

Today, Desert Mission has grown and greatly expanded its community programs. Yet its purpose remains unchanged: to meet the needs of the vulnerable in our community.

## *But what about tomorrow?*

The Desert Mission Endowment provides a reliable and predictable source of revenue in perpetuity, thereby securing the future of Desert Mission and its ability to serve our community.

Donor generosity to Desert Mission is a beautiful act of service that makes a direct impact on the lives of our neighbors in need.

## A message from Sue Sadecki, Executive Director, Desert Mission

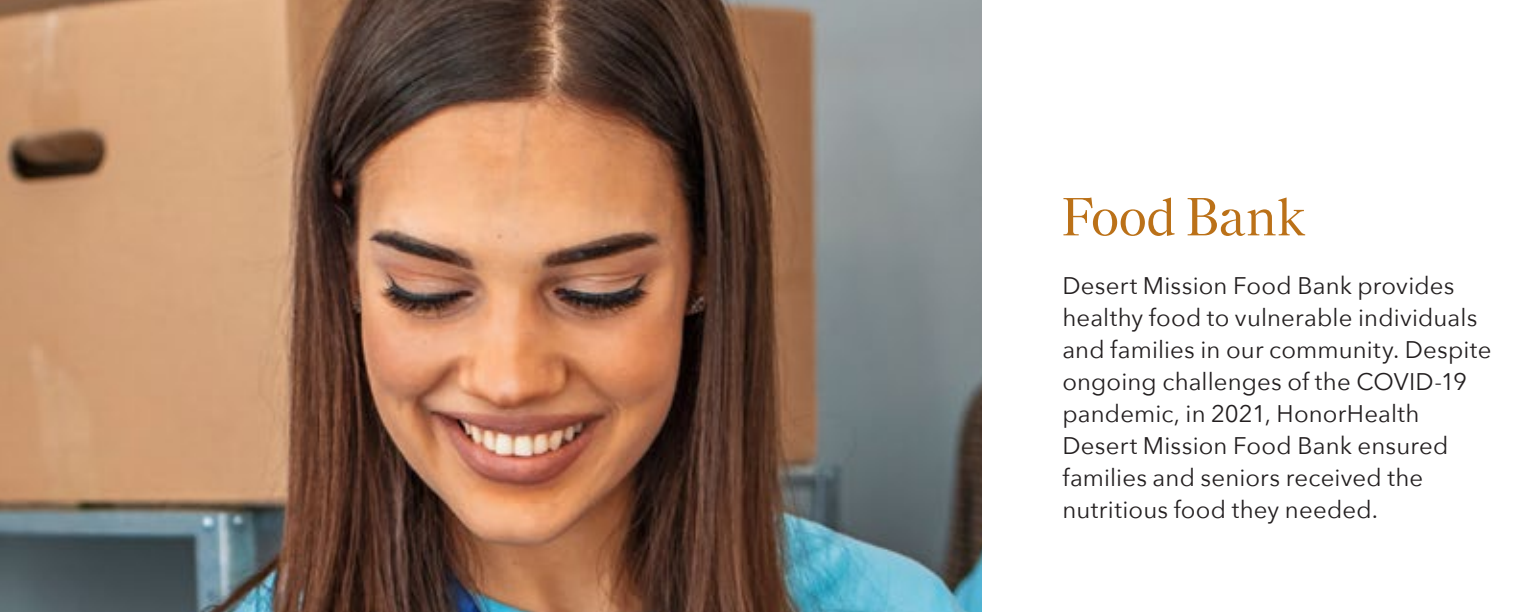
Desert Mission was built upon a foundation of caring neighbors building a kind community over 95 years ago. When the Phoenix tuberculosis communities developed in the Sunnyslope area, many helpful neighbors accepted the call to action supporting families, children and aging adults with support, food and additional services.

These past few years we were introduced to COVID-19, and that has reminded us that gifts of kindness and support truly are the foundation of our highest mission as a

community: serving our friends and neighbors.

With your support, volunteerism and financial gifts, we have been able to serve many friends, neighbors and communities who may have never before experienced the need for additional support. Thank you for your generosity, as we can only build resilient, strong, healthy communities together.





## Food Bank

Desert Mission Food Bank provides healthy food to vulnerable individuals and families in our community. Despite ongoing challenges of the COVID-19 pandemic, in 2021, HonorHealth Desert Mission Food Bank ensured families and seniors received the nutritious food they needed.



## Adult Day Health Care

This program offers older adults and those with physical or cognitive challenges a safe, positive environment and beneficial activities. The program also provides caregivers with much needed respite.

Continuing to follow COVID-19 safety guidelines for this at-risk population, approximately 20 participants per day, ranging in age from 56-101, attend up to five times per week.

**88% have dementia**

**64% live with a relative**

**36% reside with a spouse**

**18% have diabetes**

**21% have high blood pressure**

**27% are veterans**

## Lincoln Learning Center

Desert Mission Lincoln Learning Center creates the strong foundation children need for future academic success, regardless of their socioeconomic background. A licensed, accredited childcare and early education program, Lincoln Learning Center is one of the few Arizona schools meeting the nation's highest standards for child development and school readiness.

### 2020/21 SCHOOL YEAR

**271 children served age six weeks to 12 years**  
*—fewer than usual due to COVID-19*

**31% identify as a racial or ethnic minority**

**27% received financial assistance**

**98% of pre-K graduates were assessed as kindergarten-ready**



Spanning decades, your contributions have made Desert Mission what it is today: a beacon of help and hope for people in need in our community.

**15,367**

emergency food boxes delivered to those in need

**6,522**

households assisted with fresh, nutritious food

**3,213**

federally funded emergency food boxes for low-income seniors

**10,674**

SnackPacs to students in low-income school districts

**1,630**

back-to-school backpacks for students in need

# TRANSFORMATIONAL

*gifts*

With deep gratitude  
for your transformational  
gifts in 2021

## GUARDIAN OF HONOR

Lifetime gifts of \$10 million or more

Bob Bové  
The Honor Ball  
HonorHealth Employee Giving Campaign  
Virginia G. Piper Charitable Trust

## CENTURION

Lifetime gifts of \$5,000,000 to \$9,999,999

Debi\* & Jerry Bisgrove  
Farley Family Charitable Foundation  
HonorHealth Auxiliary  
Night of Gold  
Mr. & Mrs. Charles W. Palmer ■  
Stardust Foundation  
Anonymous (1)

## LUMINARY

Lifetime gifts of \$1,000,000 to \$4,999,999

The Arizona Republic  
Armstrong/McDonald Foundation  
Charles A. Becker Foundation  
H. N. & Frances C. Berger Foundation

Howard & Joy Berlin ■  
Blue Cross Blue Shield of Arizona  
The Board of Visitors  
Mr. & Mrs. Drew M. Brown ■  
Edyth Bush Charitable Foundation, Inc.  
C.A.R.E. by Desert Mountain Members  
Delta Dental of Arizona  
Mike\* & Carol Dillon  
Discount Tire Co., Inc.  
Curt & Jean Feuer ■  
Sue Fletcher ■  
Laurie & Budd Florkiewicz ■  
Natalie & Ed Gaylord ■  
Michael & Heather Greenbaum ■  
Bruce\* & Diane Halle  
HonorHealth Medical Staff  
HonorHealth Pro-Am  
Hope for the Cause – Mirabel Charity Classic  
John C. Lincoln Medical Center Auxiliary  
John C. Lincoln Medical Center Medical Staff  
Elaine & Dalton Knauss Family  
The Kresge Foundation  
Joseph\* & Shawn Lampe ■

Mr. & Mrs. Frederick A. Lynn ■  
The Kemper & Ethel Marley Foundation  
Lori McClelland & Michael Harris and Family  
Barbara\* & Bill Michaels  
Fred & Linda Milanovich  
Nicholas Family Foundation ■  
Playing for T.I.M.E.  
Bill Pope  
Jeffrey G. & Barbara Schlein ■  
Barbara Scrivner  
The Silverman Family Foundation  
Mary Joy & Jerre Stead ■  
The Steele Foundation  
Karen & Craig Stull  
Mr. & Mrs. Frank D. Trznadel ■  
Kathleen & Robert Wade ■  
Rob & Melani Walton Foundation  
Mr. & Mrs. David J. Watson ■  
Del E. Webb Foundation  
Wells Fargo  
E. Louis Werner, Jr.\* & Sandy Werner  
Anonymous (4)

## CHAMPION

Lifetime gifts of \$250,000 to \$999,999

Abbott Laboratories  
Pat & Lou Adimare ■  
Affiliated Hospitalists, PLC  
Albertsons Companies Foundation  
Janet & Benny Alon  
Ameriprise Financial  
Aramark Healthcare  
Arizona Center for Cancer Care  
Arizona Community Foundation  
Arizona Public Service  
AstraZeneca  
Margaret & Donald Austin  
Mary Ann & Looe Baker III  
Ron & Ruth Baker ■  
Bank of America  
BBVA Compass Bank  
BHHS Legacy Foundation  
Lyn & David Bishop  
Clarence\* & Judy Bowe ■  
Harriet D. Brewster Foundation  
Cheryl & Robert Budde  
Ranie & Michael Cahill  
Paul Calderon & Mary Crawford  
Cardiovascular Consultants, Ltd.  
Melvin\* & Carol Carro  
CenturyLink  
Carol Clemmensen  
Larry Clemmensen  
Barbara\* & Steven Crystal and Family ■  
Herbert K. Cummings Charitable Trust  
The Nathan Cummings Foundation  
Deer Valley Medical Center Medical Staff

Deer Valley Medical Center Volunteer Services  
Ric & Robin Donnelley ■  
Phil\* & JoEllen Doornbos  
Jacquie & Bennett Dorrance  
Diana V. Douglass  
Herbert H. & Barbara C. Dow Foundation  
Eileen & Charles Dubroff  
Susan & Bob Duffy ■  
Eastman Kodak Company  
Gail\* & Alan Elkins Family  
Susan & Carter Emerson ■  
Ensemble Real Estate Solutions  
Ethicon Endo-Surgery – A Johnson & Johnson Co.  
Trish & John Ferree ■  
John Fick  
Flinn Foundation  
Rhonda & Christopher Forsyth  
Joan & Rick Fox  
Fry's Food Stores  
Helen M. Galvin Charitable Trust  
Joanne & Ernest Garcia  
Michael & Sheila Geddes  
Sheila\* & Richard Gerry  
Janet Henrich Glaser & Chip Glaser  
Robert & Linda Glassman  
Sasha & Rodney Glassman ■  
Globe Foundation  
Chester & Ann Goldberg Family Trust  
James & Deborah Graber ■  
Dayton F.\* & Laura R. Grafman  
Great Clips  
Erika & Roger Greaves  
Dr. Linda & James Greer  
The Harold & Jean Grossman Family Foundation  
Cal & Trudy Hahn

Colleen & David Haig  
Norman & Donna Harbert  
Carol & John Henderson  
Jan & Howard Hendler  
Laura & Jim Herbster  
Lynne & Lang Herndon ■  
Dr. Kim & Wally Hewson  
Hologic  
Stewart Horejsi  
Carolee & Steven Hunton ■  
The Ibis Foundation of Arizona  
Dr. & Mrs. Delmas Jackson  
Dolf & Diane Jakobs  
Delbert W.\* & Marjorie Johnson  
Mr. & Mrs. Thomas F. Jones, Jr. ■  
John & Barbara Jorgensen  
JPMorgan Chase & Co.  
Ellen & Howard C. Katz ■  
Kitchell Contractors, Inc. of Arizona  
Margot & Dennis Knight ■  
Mark & Betsy Kogan  
Kuhle Family Foundation  
Todd & Kelly LaPorte ■  
Larson Family Foundation  
Las Salas, Inc.  
Ruth\* & Bob Lavinia ■  
Sharron & Delbert Lewis  
The Lincoln Family  
Pit & John Lucking ■  
Shireen Malouf-Stuart  
Murray & Ina Manaster ■  
Maricopa County Department of Public Health  
MassMutual Financial Group  
Tim & Alison McAdam ■  
McCarthy Building Companies  
McKesson  
Medical Diagnostic Imaging Group

MidFirst Bank  
Naomi Caras-Miller & Alvin H. Miller  
Eliot & Doris Minsker ■  
Henry & Ardis Mohrschladt  
Kathy & Gene Monroe  
Motorola  
Patricia & Bill Naumann  
Dr. John & Shaheen Neil ■  
Florence\* & Jerry Nelson ■  
Northern Trust  
Kim & Mike Novotny  
Jan & Stephen O'Neill ■  
Pfizer  
Phoenix Affiliate of Susan G. Komen for the Cure  
John William & Valerie L. Pihl ■  
Shirley & Paul Piper  
Pivotal Foundation – F. Francis & Dionne Najafi  
Lloyd\* & Sharon Powell  
The Dr. William Price Trust  
Prudential Financial  
Douglas\* & Anne Pruessing  
PSS Family Fund  
Nina Mason Pulliam Charitable Trust  
Lillian & Jim Reed ■  
Kelley & Keith Reese  
Republic Services  
Maureen & Paul Rubeli  
Rita & Richard Russell ■  
Howard & Jill Sadkin  
Tom & Mary Sadvary ■  
Scottsdale Charros  
Scottsdale Emergency Associates, Ltd.  
Siemens Medical Systems, Inc.  
Susan & Richard Silverman  
The Donald & Kimberlee Slager Foundation  
Barbara Slater  
Joe & Madonna Smyth

Snell & Wilmer  
Southwest Human Development  
Southwest Medical Imaging  
Bud & Judy Stanley  
Barbara Henkind Steiner  
Robynn & Robert Sussman ■  
Susan & Nicholas Sutton  
Linda & Bob Teal  
The Thunderbirds  
Sally & Gregg Tryhus ■  
Mary & Fred Tucker  
US Airways  
The USAA Foundation  
Valley Anesthesiology Consultants, Ltd.  
Dr. & Mrs. Kevin Veale ■  
Vitalyst Health Foundation  
W. D. Manor Mechanical Contractors  
David\* & Judy Ward ■  
Alan\* & Irene Weinberg  
Mary Ann Wells  
Linda & Bill Werner  
Ann & Steve Wheeler ■  
The Withycombe Family ■  
Dr. Judith G. Wolf ■  
Joan & D. Ronald Yagoda  
Dr. & Mrs. Haruto W. Yamanouchi  
Charlotte & John A. Yates, Sr.  
Marlene\* & Lee Zuker  
Anonymous (10)

## Donor Recognition Societies

# Circle OF DISTINCTION

Distinction suits you.

### CIRCLE OF DISTINCTION

#### CAPSTONE

Gifts of \$100,000 to \$249,999

AHA Hospital Research & Education Trust

Peter & Judy Ambelang

American Slavic Association

American Valet

Barbara J. Anderson

Anthem at Merrill Ranch Community Council  
"Walk for the Cure"

Arizona Diamondbacks Foundation

Arizona Oncology

Mary & Marty Aronson ■

Association of Arizona Food Banks

Avnet

AZ Food Bank Network

Barrow Brain and Spine

Barton Family Foundation

Timothy & Carol Barton ■

Mr. & Mrs. Seymour Baskin

Julie & Tom Belgrad

Philip & Lydia Bell

Belmont Equipment

Richard & Diane Belveal

BMO Harris Bank

BOK Financial

Judith & Peter Brandeis

Linda Brock, PhD

Margaret & Chad Carpenter

Cisco Systems, Inc.

Citigroup

Paula & Dan Coleman

Jerry & Jennie Cox

Robert\* & Patricia Cox

Paul & Claudia Critchfield

David A. Damore

Devenney Group Ltd., Architects

The Dial Corporation

DMB Associates, Inc.

DPR Construction

Eileen & Charles Dubroff

Eli Lilly & Company

Envision Healthcare Corporation

Epic

Ernst & Young

Nelson Faux, MD

Fiesta Bowl

Julie N. Firestone

Sheila & Alan Fitzgerald

Penny Galarneau ■

Gammage & Burnham

GE Foundation

Genentech BioOncology

General Dynamics

Mr. & Mrs. Garry V. Goett ■

Dr. Charles & Laurie Goldstein

Wendy & Peter Gordon

Terry & Mary Ellen Gould

Greenberg Traurig, LLP

Ingrid E. Haas, MD & Mr. Charlie Van Dyke ■

The Hankins Foundation

Hansen Mortuaries and Cemetery

Pete & Mimi Hathaway ■

Connie & Don Head

Lewis Henkind & Donna Isaacson

Ray & Anne Henning

Laura & Jim Herbster

John\* & Beth Hessler

Fred Hessler & Kathie Mundy ■

Charyn & Bud Hoffman

Honeywell

Humana

Dr. Ray & Eunice Hurm

Independent Hospitalists

Industrial Development Authority – City of Scottsdale

ING Aetna Financial Services

The Jack Ingebritson Foundation

InterTech Computer Products

Jan & Norm Jacobs

John C. Lincoln Heart Institute

Jones, Skelton & Hochuli

Kandy Kendall & Ann Beisser

Kent & Wittekind, PC

J. W. Kieckhefer Foundation

The Stuart E. Kirk Family

Dr. Clarke & Laurel Lambe

Robert\* & Adelyn Leander

Diana\* & Ron Leeds

Mrs. William M. Leslie, Jr.

Mr.\* & Mrs. Bruce R. Lieberman & Family

Lincoln Emergency Physicians

Kathryn Lincoln & Christopher Perez ■

Annell Livingston

Lockton Companies

Dr. & Mrs. Frederick F. Marciano

Medtronic

Merrill Lynch

Mary & Joe Moeller

Dr. Phillip & Brenda Moeser

Margaret T. Morris Foundation

Rob Moy Memorial Motorcycle Run

Tally & Nate Nathan

Elyse & Bill Newton

Mrs. Clyde (Charlee) Oberlin

Okland Construction

orcutt | winslow

OrthoArizona - Arizona Bone & Joint Specialists

The Osteosarcoma Institute

Pediatrix Obstetrix Medical Group

PetSmart

Philips Ultrasound

Phoenix Suns Charities

Kate & A.J. Pollock

Mr. & Mrs. Douglas Post ■

Dr. & Mrs. Wilfred M. Potter

Priority Ambulance

Janet & Frank Pugh ■

Pulte Homes

Robert V. Rasmussen Foundation

The David E. Reese Family Foundation

Frederick B.\* & Pam Rentschler

Nancy Harris Robertson ■

Terence & Robin Roche

Ross Products

The Sheldon R. Roth Family

Salt River Project

Max M. & Marie A. Schirtzinger

Phil & Nancy Schneider

Schumacher European, Ltd.

Dr. Eugene I.\* & Lenore Schupak

Scottsdale Pathology Associates, Ltd.

Larry Seay & Barbara Walchli ■

Dr. & Mrs. Richard Silver ■

Bill\* & Ilene Smith

Mary Jean Snell

Southwest Ambulance

St. Jude Medical, Inc.

Michel A. Sucher, MD

Dr. Frank & Linda Surdakowski ■

Surplus Line Association Foundation

Vern & Cille Swaback

Paul\* & Patricia Taylor

Bob & Corrine Tomlinson ■

The Tradition at Desert Mountain

Trends Charitable Fund

The Tribune

TriWest Healthcare Alliance

Ultimate Software

Valley Radiologists

Valley Surgical Clinics

Van Loo Family Trust

Arvind\* & Karen Varma

Vitalant

Dr. & Mrs. Daniel Von Hoff ■

Ann & Carlos Wagner

Lester A. Walker Foundation

Mr.\* & Mrs. Howard E. Wall  
Drs. James & Charlene Whitfill ■

Mr. & Mrs.\* Jack Woltz  
Kimball & Marilyn Woodrow  
Philip\* & Kathy Zeblisky  
Ellie\* & Michael Ziegler  
Anonymous (5)

### CIRCLE OF DISTINCTION

#### KEYSTONE

Gifts of \$50,000 to \$99,999

21st Century Oncology

Abiomed

ABM Janitorial Services

Dayton & Shelley Adams

Aetna

Affiliated Chest Physicians

Ray Agostino

Marilyn & Dave Alexander

Alliance Bank of Arizona

American Express

American General Financial Group

American Society for Metabolic & Bariatric Surgery

Angelica Textile Services

Arizona Facility & Consulting Services

Arthur Andersen & Co.

Kathy & Larry Bain

Gary & Janet Baker ■

Jerry Barnier & Julie Johnson

Gina & Tom Batson ■

Frederick L.\* & Marilyn Bauch

Janet & Doug Baughman

Beacon Pointe Advisors

William H. & Mary T. Beckley

Joyce & William Bendix

Rebecca & William F. Bennett

Jay I. Berk

Naomi & John V. Berry

Beus Gilbert Law Firm

BKD CPAs & Advisors

BMC Electric Co., Inc.

Ginger & Don Brandt

Don & Nancy Brinton

Shirley\* & C. M. "Bud" Brooks

Dr. Karen A. Brown\* & Mr. David R. Wolford

Dr. & Mrs. James Burke

Cachet Homes

Candelen

Cannon & Wendt Electric

Cardinals Charities

CBIZ MHM

CBRE

Keith & Elaine Christian

Cigna Healthcare of Arizona

Larry & Kimberly Coben

CoBiz Financial

Continental Homes

Tim & Nan Corwin Charitable Pass-Through Grant Fund of the FM Area Foundation

Jim & Maxine Coyne

Coyotes Charities

Dr. & Mrs. Jack Crowe ■

CVS/Caremark

Ira W. DeCamp Foundation

Deloitte

Margaret J.\* & Edwin K. Delph

Desert Financial Credit Union

Desert Mountain Consultants in Anesthesia

Desert Mountain Properties  
Karen & Bryan DeWitt

Victoria & Peter DeWitt

Diagnostic Hybrids, Inc.

Harvey\* & Marnie Dietrich

Dignity Health

Drs. Carole & David Drachler ■

Liz & Ken Draeger

The Herbert R. Drinkwater Family

Drive 4 Doug

Dr. & Mrs. Thomas L. Emmick

Cathleen & Drue Engels

Enterprise Bank & Trust

Ardie & Steve Evans

Extreme Integration

Sally & David Falck

Gail & Gerry Farber

Alberta B. Farrington Foundation

Edward Fein

FHP Health Care

First Christian Church

Tom & Joyce Fisher

Dr. & Mrs. James Fishman

Alice B. Fleischer

Stuart & Sharyn Frankel

DeeDee & Richard Friedlander

Dr. & Mrs. Jay S. Friedman

Tamara & Julian Fruhling

Arthur L. & Joan A. Funk Charitable Foundation

John\* & Marita Gallagher

Scott Gauthier

GE Medical Systems

Dr. Marysia & Matthew Gerson

Linda & Vic Getsinger

Gila River Indian Community

Gilbane Building Company

Goldberg Family Foundation

Mary Lou O'Brien Goldstein & Melvin M. Goldstein

Bob\* & Marty Gonzalez

Ann & Gary Goodman

Frank & Betsy Goodyear  
Mrs. Mary D. Gosule

The Haldan Family

Gene\* & Gloria Harper

Heartstrings – DC Ranch Community Foundation

Ralph\* & Maxine Henig

Henkel Corporation

Hernandez Companies

Andrea & Mitchell Hershey  
Rhonda & Brigadier General J. Derek Hill

Hirtle, Callaghan & Co.

The Hitzeman Family

HonorHealth Rehabilitation Hospital

# Circle OF DISTINCTION

Lynda & Arthur Horlick  
 R. S. Hoyt, Jr. Foundation  
 Mr. & Mrs. Leonard W. Huck  
 Dr. Dwight\* & Millie Hudson  
 Hunt Construction Group, Inc.  
 Stan\* & Helen Hutchison  
 Carolyn & Craig Jackson  
 Theodore J.\* & Helen Jaros  
 Jessco Electric  
 Deanna & Thomas Jones  
 Maureen & Joseph Kaiser  
 Carol & Ken Kasses  
 Kaufman Hall & Associates  
 Beverly & Douglas Kilgore  
 Kirksville College of Osteopathic Medicine  
 Ana & Mike Kleingartner  
 Donna & Joel Kramer  
 Lynn & David Lamparter  
 Lanmor Services, Inc.  
 Eleanor Light  
 Christine & Bruce Lincoln  
 Joyce Lippincott  
 Kathryn & Robert Londeree  
 John F. Long Foundation  
 Dr.\* & Mrs. H. J. "Tim" Louis  
 Shari & David M. Lowe  
 Mr. & Mrs. Randall B. Luster ■  
 Robert\* & Gloria Lux  
 The MacLeod Family  
 Penny & Wayne Mailloux  
 Jean Marley ■  
 Mr. & Mrs. Stephen A. Martori  
 Dr. Robert McCulloch

Medtronic Foundation  
 Cheryl & Chris Melocik ■  
 Merck & Co.  
 Midwestern University  
 Judy & Bijan Mohraz  
 Marilyn & Joseph Monteleone  
 Carol & Arturo Moreno  
 Morgan Stanley  
 Susan & Mark Mulzet  
 Dr. & Mrs. Alfred Mutchnik  
 Jill & Rob Muth  
 National Bank of Arizona  
 National Hair Loss, LLC  
 No Kid Hungry  
 Otto Environmental Systems North America  
 Owens & Minor  
 Pacificare of Arizona  
 Stanley K.\* & Julia Paulsen  
 Chad Paulson  
 Phoenix IDA  
 Elisa & Jonathan Pinkus  
 The Pizzimenti Family  
 The Plaza Companies  
 Jody & Kerry Pokorski  
 Dr. Jack & Ruth Poles  
 Max & Judith Poll ■  
 John & Cory Pollack  
 Polsinelli  
 Dana K. & Peter A. Powell  
 Price Charities  
 April & David Price ■  
 Marilyn Propstra  
 The Honorable & Mrs. Dan Quayle

Bob Ramsey & Jenny Norton  
 Vikki Raskin & Larry Smith  
 Relizon  
 Bob\* & Karla Reynolds  
 Deborah & Dale Rittenhouse ■  
 Drs. W. Scott & Karen Robertson  
 Dr. & Mrs. Irv Rollingher and Family  
 Rotary Club of North Phoenix  
 Dr. & Mrs. Vincent J. Russo  
 Mary Jane Rynd  
 Vicki & Allen Samson  
 San Francisco Giants  
 Sanders & Parks  
 Dr. James L. Schamadan & Family ■  
 Maria & Peter Schick  
 Rana & Joseph N. Schwartz  
 Dr. Gerald & Donna Schwartzberg ■  
 Scottsdale Cancer Center  
 Scottsdale Insurance Company  
 Chuck & Beth Scully  
 The Segal Family  
 Enid & Michael Seiden  
 Shamrock Foods  
 Sharecare Health Data Services  
 Ann Shideler  
 Martha Louchheim Skeans\* & Clark Skeans  
 Carolyn & Peter Slocum  
 SmartPractice  
 Linda & Irwin Smith  
 Sonora Quest Laboratories  
 Elaine C. Spencer  
 Carol & David Stahle  
 Standard Register  
 Leonard Steiner  
 Barbara & Joseph Straining  
 Carolyn & John Stuart  
 Sundt Foundation  
 SYNTHES USA  
 Maurice\* & Lois Tatelman

Tatum Ranch Golf Club  
 TDIndustries  
 Tech Data Corporation  
 Tel Tech Networks  
 Telagen West, LLC  
 The Torhjem Foundation  
 The Vanderhout Family  
 Volcano Corporation  
 Walmart Foundation  
 Louis A. Weil, Jr.\* & Mary Auran Weil  
 Patricia & Michael Welborn ■  
 Woodward Family Fund  
 Dr. Clark & Sandi York  
 Anonymous (14)

**CIRCLE OF DISTINCTION CORNERSTONE**  
*Gifts of \$25,000 to \$49,999*

Abbot Downing  
 Joyce\* & Roger Adams  
 Advanced Marketing  
 J.R. Albert Foundation  
 All Saints Lutheran Church  
 Anatomic Pathology Associates  
 Stephen & Teresa Andersen  
 Jerry\* & Dora Angle  
 Nathan Anspach & Maritza Cabrera  
 Archsol  
 Arizona Commercial Management  
 Arizona Digestive Health  
 Arizona Health Facilities Authority  
 Arrow Electronics  
 Assistance League of Phoenix  
 The Auen Foundation  
 Gail\* & Robert Auslander  
 Auxilio, Inc.  
 Susan & Kenneth Baker  
 Banner | Aetna  
 Susan & Stephen Bansak  
 April & Eugene Barron

Patricia Barrows  
 Barton Malow Company  
 Polly & Thomas Baughman  
 Deanna Hopkins Bell ■  
 Judi & Paul Bennett  
 BHE Renewables, BHE Transmission & Long Realty  
 Gilbert\* & Covella Biggers  
 Nancy\* & Charles Bivenour  
 Robin Blackstone, M.D.  
 Mary Jo Bobbe  
 Andrew\* & Lynn Bohrnsen  
 Donna & Gus Boss  
 Arthur & Carol Brandon  
 Dr. Mark Brenner & Kathy Blair  
 Dr. Melanie A. Brewer & Kenneth T. Krebs  
 Brighton Collectibles  
 Dr. & Mrs. C. Gilberto Brito  
 Betsy & Kent Bro  
 Marilyn & Marvin Brodie  
 Broening, Oberg, Woods & Wilson P.C.  
 Mary Jo & Bill Brown  
 Sandy & Jim Bruner ■  
 Dr. Brad & Lisa Bruns  
 Builders Guild  
 Stephen\* & Shelby Butterfield  
 Caden Thomas Foundation  
 Dr. & Mrs. William Cain  
 Cannon Design  
 Sharon & Lloyd Canton  
 Shaun\* & Mary Cantrell  
 Cardinal Health  
 Cardinal Health Foundation  
 Jose V. Catalan  
 Cerner Corporation  
 Alaina & Louis Chabrier  
 Charon/ECA  
 Pasquale\* & Nancy Cheche  
 Linda & Michael J. Christensen  
 Ira Clark, Ph.D.\* & Diane L. Brooks, Ph.D.  
 Climatec Building Technologies Group

Jim & Maria Cockrum  
 Lawrence\* & Renee Cohen and Family  
 Libby & Joel Cohen, MD ■  
 Priscilla & Louis Cohen  
 Commercial Service Solutions, LLC and Image Property Services  
 Congregation Beth Israel  
 Sandra & Richard Conner  
 The Clarence & Almeda Conrad Foundation  
 Sandra & Richard Conner  
 Cooper Tire & Rubber Company  
 Tina & John Cooper  
 Coppersmith Gordon Schermer Owens & Nelson, PLC  
 Mary Cornell  
 Ben & Nancy Costabile  
 Mr. & Mrs. James Cramer  
 Pamela L. Crowe  
 Cuneo Foundation  
 CVS Caremark Charitable Trust  
 Cypress HomeCare Solutions  
 Dain Rauscher  
 Andrei Damian, MD  
 Elisabeth de Picciotto  
 Deaderick Investment Co.  
 Shirley & John Dean  
 Deer Valley Unified School District  
 James & Teresa DeLellis  
 Michael & Geri DeMuro  
 DeRoy Testamentary Foundation  
 Desert Carousel Horse Show  
 Dickinson Wright PLLC  
 Dr. Patrick J. Donovan & Ms. Cynthia A. Byers  
 Dr. Jill Gives Hope Foundation  
 Duley-Bolwar & Associates, Inc.  
 Mr. & Mrs. Donald Dupree  
 Anne & Dennis Eardley  
 Dr. Michael & Suzanne Eder

Edwards Lifesciences, LLC  
 Deb Ehrlich  
 James O. & Catherine L. Eide  
 EMC2 Corporation  
 Emergency Medical Consultants  
 Employees Community Fund of Boeing Arizona  
 Dr. Jay & Dee Epstein  
 Dr. Ruann Ernst & William Riffle  
 Hamilton Espinosa  
 Mrs. Elliott M. Estes  
 Darlene M. Evancho  
 Ruth & Dennis Evans  
 Express Scripts Foundation  
 Elizabeth Farhart & Brad Gazaway  
 Pierre Fauchard Academy Foundation  
 Fetal & Women's Center of Arizona  
 The FINOVA Group, Inc.  
 Sally\* & George Fischbein  
 Fraternal Order of Eagles, Arizona State  
 Fraternal Order of Eagles, Sunnyslope  
 David L. & Cathy D. Freedman  
 Freeport-McMoRan Copper & Gold  
 Dr. & Mrs. Jack A. Friedland  
 K. Donald\* & Mollie Fry  
 FSMB Foundation  
 Fukuda Denshi  
 Barry & Kathy Fuller  
 Marilyn\* & Lawrence C. Gabriele  
 Debbie Gaby Charities  
 Jerry & JoAnn Gaffaney  
 Gallagher & Kennedy  
 Leslie\* & Robert Garson  
 Drs. Bernard & Sharon Gburek  
 Barbara & Charles Geer  
 General Mills Foundation  
 Jan & Alfred Ghelfi  
 Susan & Jerry Gilbert

Jack & Lisa Gildar  
 Inger & William Ginsberg  
 GlaxoSmithKline  
 Go Green Landscape & Janitorial Services  
 Herb\* & Judy Gold  
 Gale & Scott Golden  
 Ellen & William Goldstandt  
 The Goodyear Tire & Rubber Company  
 Dr. & Mrs. Bradley Gordon  
 Govig & Associates  
 Dr. Randall & Jane Grace  
 The Grayhawk Classic Residents' Foundation  
 Belle Griffiths  
 Larry & Margo Guli  
 Ethelmae S. Haldan  
 Carrie & Brian Hall  
 David & Kathleen Hall  
 Hanger Prosthetics & Orthotics  
 Nancy Hanley  
 Joan & Donald Hansen  
 Coleen & John Harrington  
 Harris Healthcare Solutions  
 Mrs. John D. Harris  
 Laura Hays  
 Health Net of Arizona  
 Healthcare Transitional Funding Corp  
 Healthpeak Medical Office Properties, Inc.  
 Thomas Hendricks  
 Dorothy & Aaron Henschel  
 Hensley & Co.  
 Herman & Sons Piano Co.  
 Doris J. Hill  
 Susan Hoffmeister ■  
 John & Elaine Horejs  
 William Howe\* & Christine Hardy  
 The Humana Foundation  
 I-ology, Inc.  
 Ironwood Cancer & Research Centers  
 IT Partners



# Circle OF DISTINCTION

Mr. & Mrs. John M. Jetter  
 Richard & Nancy Joaquim  
 Gregg & Carol Johnson  
 Jones Medical Industries  
 Junior League of Phoenix  
 Dr. & Mrs. Jamie Kapner  
 Robert\* & Sue Karatz  
 Merrill & Van Kasper  
 Dr. Gary & Catherine Kauffman ■  
 Jon\* & Lanora Keller  
 Kids Sports Stars – Azimuth Foundation  
 April & Greg Kilfoyle  
 Rev. Dr. L. Wilson Kilgore\* & Arlene Knight Kilgore  
 Richard & Eileen Kilstrom  
 Golda O. King  
 Diana & Mark Kirk  
 Dr. & Mrs. Joseph V. Klag  
 Eleanore & Will Klein  
 Keith\* & Jo Kleist  
 Cliff & Antoinette (Toni) Klima  
 Mr.\* & Mrs. Ralph M. Knight  
 Christine Kontgas & Michael Craig  
 Dr. & Mrs. Stuart Kozinn  
 Susan & Moe Krabbe  
 Barbara & Theodore Kraver  
 Robin & David Kreutzberg  
 Terry & Mark Krivoruchka  
 Mr. & Mrs. Andrew Kroot  
 Nathan\* & Donna Kurzrok  
 Mr. & Mrs. Kelly LaFay  
 Linda & James Landers  
 LaneTerralever

Ellen & Craig Langel  
 Loralee & Jared Langkilde ■  
 Dr. Paul & Debra Laprade  
 Terry & Sara Lee  
 Leslie's Charitable Foundation  
 Edward A. Lesser  
 Carol & Jon Levy  
 David\* & Sara Lieberman  
 Elizabeth & James Lincoln  
 Lillian Lincoln Foundation  
 Linda's W.I.S.H.  
 Drs. Katherine Sutherland Loewen & John Loewen  
 Roman Lopatynski & Cindy Litterer Lopatynski  
 Eric Lorentzen  
 David Lorsch\* & Cynthia Lubin  
 Ralph\* & Lucile Love  
 LPGA Foundation  
 Wendy & Peter Lyons  
 Karl & Patricia Maas  
 Julie Arvo MacKenzie & Robert MacKenzie ■■  
 Lori Maling & Howard Hirsch  
 Mammel Foundation  
 Manheim Phoenix  
 Lalit Mansukhani ■  
 Markland Properties, Inc.  
 Marsh USA, Inc.  
 Gail & James Marten  
 Jenny & Don Matheson  
 Mayo Clinic Scottsdale  
 Dr. Donald F.\* & Joy McCann  
 Margaret & Michael McCormick

Carol Henderson McCune  
 McDonough Corporation  
 McGough  
 Mary McKeon  
 Anne McNamara & Shawn Harrell  
 Laurie McWeeney  
 Mead Johnson Nutritionals  
 Lisa & Derek Mead  
 Mediant Health Resources  
 MEDNAX Services, Inc.  
 Susan & Charles Melker  
 Drs. Deborah & David Mendelson  
 Meritage Homes  
 MFS Investment Management  
 MicroAge  
 Steven\* & Jeanine Mielke  
 Frank\* & Jan Miller ■  
 Larry H. Miller Charities  
 JP & Monique Millon  
 Mr.\* & Mrs. Edward Minor  
 Marcia Mintz & Liz Delgado  
 William & Joanne Moeller Foundation  
 Deborah & Stewart Morick  
 Morrill & Aronson  
 Jeff Morrow  
 Bill\* & Janet Mueller  
 Judy & Kent Mueller  
 Patrick & Barbara Murphy ■  
 Mutual Insurance Company of Arizona  
 Jim & Dr. Jackie Myers  
 Dr. A. Leonard\* & Lynn Nacht  
 Dr. Stephen & Marti Nathan  
 Dr. Tiffany & Dan Nelson  
 Network for Continuing Medical Education  
 North Phoenix Infectious Disease  
 Mariangela & Christopher Noyes  
 NTD Architecture  
 nThrive  
 Nuclear Electric Insurance Limited

Ogletree Deakins  
 Freidolph K.\* & Bonnie Olson  
 Olsson Family Foundation  
 OpenWorks  
 Orangewood Presbyterian Church  
 Aileen\* & Meyer Osofsky  
 Pacific Life  
 Panoramic Press  
 Margaret & Anthony Paoni  
 Parke-Davis – A Warner Lambert Division  
 Andrea Parrella & Lee Hurney  
 Partners for Paiute  
 Joyce & Bernard Patton  
 Camille Lincoln-Paulin & Gregory Paulin  
 Bobbie & Michael Paulson  
 Leslie & Bruce Pearson  
 Mrs. Austin Peck  
 Marcia & Borah Perlmutter  
 Dr. Savas Petrides\* & Terry Switsky  
 P.F. Chang's China Bistro  
 Phelps Dodge Foundation  
 Phoenix Emergency Group  
 Phoenix Motor Company  
 Phoenix Thunderbird Rotary Club  
 Physicians Realty LP  
 Barbara M. Pickrell  
 John A. Pope, M.D. ■  
 Jill & Larry Porcellato  
 Rex & Margie Porter  
 Premier, Inc.  
 Helene & Joe Presutti  
 Darlene Keller-Price & John Price  
 Prosthetic Orthotic Associates  
 Prudential Arizona Realty  
 Purdue Pharma  
 R.O.I. Properties  
 Don\* & Lynn Reed  
 Kris & David Reid ■  
 Peggy Reiley

Arlene & Richard Reitman  
 Brian\* & Barbara Renwick  
 Dr. Blair & Lori Reuben  
 Dr. & Mrs. David G. Rizik ■  
 Robb & Stucky  
 Thomas G.\* & Jean Reed Roberts  
 Dr. Leslie & Cindy Robinson  
 Michaelynn & Bill Robinson  
 Roche Laboratories, Inc.  
 Dr. & Mrs. Francisco Rodriquez  
 Jack\* & Darlene Rosenmeier  
 Robert J. Rosepink ■  
 Susan & Robert Roth  
 Rowlands-Cox Construction  
 Jack\* & Kathryn Rubin  
 Dr. & Mrs. Thomas Runyon  
 Richard E. Ryan Family  
 Dr. Adam & Chantelle Sabbath ■  
 Sanderson Ford  
 Dr. & Mrs. Joseph Sandor  
 Lori-Ann & Scott Satran ■  
 Dewey D. Schade  
 Amy & Mark Schiavoni  
 Vince & Janet Schifano and Family  
 Sophann & Tom Schleifer  
 Carl\* & Carole Schmieder  
 The Robert E. Schneider Foundation  
 Kate\* & Howell Schorr  
 Schuff Steel  
 Ford\* & Susan Schumann  
 Scottsdale Fashion Square  
 Scottsdale Perinatal Associates  
 Scottsdale Physicians Group  
 Scottsdale Unified School District  
 Jean & Dick Segil  
 Mary & Stanley Seidler  
 Sentry Insurance  
 Shadow Rock United Church of Christ  
 Drs. Maulik & Nina Shah ■

Mrs. Merle Shapiro  
 Dr. Christopher & Victoria Shearer  
 Shetler & Associates LLC  
 Elaine & Robert Shower  
 SightCare  
 Dr. Frank & Margery Simchak  
 Drs. John & Armity Simon  
 Frederick S. Simonie, M.D.  
 Diane & Jay Simons  
 Dr. Mark Slater & Dr. Annie Weickgenant ■  
 Slattery Petersen PLLC  
 Curt Smith & Mary H. Cummins  
 Dr. Harvey Smith\* & Dr. Dorothy Lincoln-Smith  
 James & Norma Smith Foundation  
 Joanne M. Smith ■  
 Mr. & Mrs. Oliver L. Smith, Jr.  
 Jeanne D. Smithers  
 Sergei Snegireff\* & Sandi Lucas-Snegireff  
 Stacy & Joseph Soderholm  
 Marianne & Dr. Kurt Solem  
 John Solheim  
 Sons of Arizona  
 Dr. & Mrs. Sergio Sotelo  
 Southwest Gas Corporation  
 Evelyn J. Sowell  
 Joe & Pam Sparks  
 Dr. Diane Spieker  
 Cindy & Lorand Spyers-Duran  
 St. Mary's Food Bank  
 Standard Pacific Homes  
 The Stanley Family ■  
 Mr. & Mrs. Thomas A. Stephen  
 Joseph\* & Rosamond Stern  
 Christine & Frederic Stockton  
 Stryker Medical  
 Michelle Stuhl & Howard Werner  
 Christine & John Suppes  
 Betsy & Gary Swenson

Barb & Lloyd Swift  
 May & Glenn Tansley  
 Susan T. Taylor  
 Rita & Peter Thomas  
 Faron & Kristie Thompson  
 James\* & Marian H. Thornton  
 Thunderbird High School  
 Jean Tichenor  
 Tiffany & Co.  
 Dr. Francis & Heather Tindall  
 Kathryn & Wes Topping  
 Trace3  
 Tim Tracy  
 Garth & Darleen Treude  
 Troon Golf and Country Club  
 Linda & Mark Truitt  
 Trueman\* & Joan Tryhus  
 Turner Family Charitable Trust - Melissa A. Turner & R. Bradford Turner  
 University of California, San Francisco  
 Valley Toyota Dealers  
 Van Denburgh Foundation  
 Velocity Cabling & Network Solutions  
 Ventas Realty Limited Partnership  
 Viad Corp  
 Betsy Vincent & Norm LaZar  
 Lara & Scott Vineyard  
 Hollis & Christopher Volk  
 Edward J.\* & Patricia Ann Walsh  
 Eileen & Jerry Ward  
 Dr. & Mrs. John A. D. Ward  
 Waste Management of Arizona  
 Bubba & Angie Watson  
 Pamela & John Watson  
 Carolyn Wemp  
 Robert "Bob" Wenham  
 Wholesale Floors  
 Marc Wichansky  
 James Wiesenberg  
 Don Williams  
 James Williams & Jan Haedicke

Dr. Mark & Laura Williams  
 Mr. & Mrs. Alexander Wilson  
 David J. & Mary Ann Winter  
 Drs. Barbara Prah-Wix & Mark Wix  
 Women's Institute for Secure Retirement  
 Dr. Richard & Bernale Wright  
 Julie A. Wrigley Foundation  
 Wyeth-Ayerst Pharmaceuticals  
 Steven & Janice Yee  
 Yokohama Tire Corporation  
 Denise & Stephen Zabilski  
 Deedra & Jerry Zabokrtsky ■  
 The Zell Family Foundation  
 Cindi & Dan Zinda  
 Sheila & Michael Zuieback  
 Anonymous (11)

## Friends of the Foundation Platinum Society

With gifts of \$15,000 to \$24,999 in 2021

AZ Neonatology  
 Nicole & Mark Goldberg  
 Anne & Gregory Hancock  
 Steven and Lois Mihaylo Family Foundation

## FRIENDS ARE A TRUE GIFT

Please visit [HonorHealthFoundation.org/friends](https://www.honorhealthfoundation.org/friends) where we recognize with gratitude Friends in the Silver, Gold and Platinum Donor Societies with gifts in 2021.



## Donor Recognition Societies

# legacies OF DISTINCTION

Philanthropic foresight that enriches future generations with greater health and well-being. This recognition society honors donors who have made provisions for HonorHealth Foundation through their estate plan.

Katharine & Wayne Akin  
Arnold Alpert  
Dave & Louise Arnt  
Alice L. Bailey  
Ruth & Hartley Barker  
Mr. & Mrs. Lewis Barnard, Jr.  
Virginia L. Bayless  
Deborah & David L. Bean  
Charles A. Becker  
Rita Belle  
Judi & Paul Bennett  
John Benzel  
L. Harry Bergman  
Harold E. & Lola Beyer  
Nancy & Charles Bivenour  
Claire & Herman Blum  
Alice M. Bogert  
Anne L. & Walter E. Bohl  
Andrew & Lynn Bohrsen  
Veronica Bonnie  
Bob Bové  
Donna Q. & Thomas E. Brady  
Arthur & Carol Brandon  
Barbara Ann Brasted  
The John Breen Family  
Kathleen & Kile Brewer  
Rosina Bria  
Evelyn G. Brockway  
Diane L. Brooks, PhD  
& Ira Clark, PhD  
Dr. Karen A. Brown  
Edward B. Burr

Susie & Spiro Cakos  
Paul Calderon &  
Mary Crawford  
Liz & Lou Calligaro  
Carol M. H. Campbell  
Melvin & Carol Carro  
David Carroll &  
Judy Warnock  
Bill Cassidy & Leslie Griffeth  
Mr. & Mrs. Charles  
P. Cattaneo  
Linda & Michael J.  
Christensen  
Keith & Elaine Christian  
Catherine N. Church  
Natalie Brisco Clapp  
Elva S. & Robert H. Clark  
Joseph T. Clees  
Cleora V. Coates  
Paula & Dan Coleman  
Rhoda Cookson  
Robert & Mary Cornell  
Ruth & Ray Cowden  
Mr. & Mrs. Ben W. Cowles  
Flora Coyle  
Mr. & Mrs. Ambrose Cramer  
Carol Critchfield  
Tom & Mary Lynn Crowley  
Bobbi & Frank Cummins  
Mirjana R. Curtis, MD  
Mrs. A. P. Dailey  
John & Patty Dean

Ann & Ralph Del Santo  
Joseph Dietrich  
Michael J. & Carol M. Dillon  
Benjamin P. Douglass  
Diana V. Douglass  
H. James Douglass  
Karen K. Dugger  
Kimberly Dunn  
Anne & Dennis Eardley  
Pat & Randy Elder  
Irene Elgart & Mickey Moore  
Jack Eliscu  
Dr. Jay & Dee Epstein  
Diane & Steve Farrar  
Trish & John Ferree  
John Fick  
Maurine M. & Alvin A. Floss  
Rhonda & Christopher  
Forsyth  
Margaret F. Francis  
Dr. & Mrs. Denis J. Frank  
David L. & Cathy  
D. Freedman  
Charles & Helen Friedman  
Iris Frieling  
Helen R. Fullerton  
Richard C. & Ann Funk  
Margaret P. Gale  
John R. Galvin  
Michael & Sheila Geddes  
Sheila & Richard Gerry  
Robert & Linda Glassman

Charles E. Goetz  
June L. Goldman  
Susan B. & Neil Goldstein  
Earl G. Gomulka  
Dr. & Mrs. Bradley Gordon  
James & Deborah Graber  
Laura & Dayton F. Grafman  
Marie Titus Grim  
Marion & Charlie Grimm  
Gerald J. Guillory  
Barbara & Bradley Hansen  
Gene & Gloria Harper  
Willard P. & Sheila F. Harris  
John & Carol Henderson  
Ray & Anne Henning  
Ruth M. Henry  
Elizabeth & John Hessler  
Ellen Day Higgins  
June & Robert Hine  
Vladimir F. Hladik  
Edie & Bill Hodge  
Jenny G. & Irvin M. Hoffman  
Marjorie Hoffman  
Harold & Josephine Hogan  
Ruth Hoover  
Blanche S. & A.  
Garner House  
Lila & John Howard  
Virginia Emery Hull  
Matthew & Suzanne Hummel  
Helen J. & Jack B. Huntress  
Millie & Jene Jacoby  
Dolf & Diane Jakobs  
Helen & Ted Jaros  
Dorothy T. Jasinski  
Herbert H. Jennison  
Gregg & Carol Johnson  
Rebecca & Kelly Johnson  
Thomas F. Jones, Jr.  
Joe Karowski, Jr. &  
Gloria J. Karowski  
Wolfgang & Rosa  
Maria Kayser  
Gloria P. Keeti  
Margery D. Keller  
William C. Kelly  
Jerry Ketelhut, Jr.  
Greg & April Kilfoyle  
Golda O. King  
Owena King  
Dan A. Klingenberg

Catherine Klinger  
Melissa Kowalewski  
Daniel & Linda Kramer  
Jess & Virginia Kravitz  
Nancy S. La Pierre  
Richard & Frances Lamden  
Allen Landers  
Todd & Kelly LaPorte  
Ethel S. Larson  
Bill & Beverly Lavin  
Mr. & Mrs. Larry Lazarow  
Robert & Adelyn Leander  
Gregg & Laurie Lien  
Elizabeth & James Lincoln  
Helen & John C. Lincoln  
Joan & David Lincoln  
William F. Linton  
Annelise Loeser  
William J. Lofy  
Roman Lopatynski & Cindy  
Litterer Lopatynski  
Lucile & Ralph Love  
Joelle Lummis  
Rachel Lyman  
Shireen Malouf-Stuart  
Millicent Mann  
Marguerite Marshall  
Maxine & Jonathan Marshall  
A. J. Martin  
Leonora Wolf Martin  
Vincent Matousek  
Tim & Alison McAdam  
Elinor & Ralph McBride  
Pat & Terri McCarthy  
Lori McClelland &  
Michael Harris  
Pollie A. & Jack O. McFarland  
Thomas J. McGinnis  
T. Troy McNemar  
Genieva Meadows  
& W. M. Lane  
Jan & Frank Miller  
Henry & Ardis Mohrschladt  
Dr. Frederick Monteser  
Jill & Rob Muth  
Patricia & Bill Naumann  
Jerry & Florence Nelson  
Dr. Kris & Steve Nelson  
Elyse & Bill Newton  
Ann & Richard Niewold  
Dr. Norma G. Norriss &  
Mr. A. Harold Norriss

Gail Ntiappiah  
Arlene & Jack Nygren  
Marjorie W. O'Connell  
Beverly A. Oglesby  
Jan & Stephen O'Neill  
Eugene O'Sullivan, Jr.  
Kenneth W. Oswald  
Alice Palmer  
Madelene M. Palmquist  
Jack & Elaine Parker  
Nick Patel  
George Patterson  
Mr. & Mrs. Ralph S. Penn  
Helen Pezdirtz  
Barbara Pickrell  
John William & Valerie L. Pihl  
Virginia G. Piper  
Gertrude L. Platt  
George W. Podd  
Judith & Max Poll  
Rex & Margie Porter  
Patty & Joe Porter  
Dr. W. Brian & Sharla  
Ann Powley  
Andrea Price  
Dr. William & Sydelle Price  
Mr. & Mrs. Howard A. Prior  
Janet & Frank Pugh  
Debbie & Les Raatz  
Peggy Reed  
Evelyn M. & Damon  
B. Reeder  
Jean L. Reinhardt  
Susan R. Reynolds  
Mr. & Mrs. John A. Rishel, Jr.  
Marian & Jewell E. Robbins  
Marian H. Rochelle  
Mrs. Clarence Roeming, Jr.  
Albert & Claudette Romano  
William W. Rooke  
Harriet & Harold Rutchick  
Garth & Dee Saager  
Lt. Gen. Frank J. Sackton  
Tom & Mary Sadvary  
Ron "Saff" Saffer  
Judy & William C. Schaefer  
Robert M. Schafer  
Dr. & Mrs. James Schamadan  
Vince & Janet Schifano  
Max M. & Marie A.  
Schirtzinger



## Meet Legacies of Distinction Donors Rex & Margie Porter

After an exceptional care experience, Rex and Margie Porter were moved to give back to HonorHealth to further support vital care and services in our community.

They knew that an excellent way to support HonorHealth Foundation's mission is through a bequest. While updating their estate plans, they made provisions for a residual bequest, a future gift from the balance of their estate after other bequests have been fulfilled.

Using their professional expertise—Rex is a federal grants consultant, while Margie retired as an experienced non-profit executive director—the Porters are planning their future gift to support expansion of the HonorHealth Cardiovascular Center of Excellence. Specifically, their endowment will fund the cardiovascular fellowship program, to provide advanced training for the next generation of HonorHealth cardiovascular experts.

"Over the years, HonorHealth has provided us with excellent healthcare, and we want to help ensure everyone has the same opportunities we've had," the Porters explained. "We chose HonorHealth Foundation because we want to make a difference in healthcare options and the lives of others for years to come."

# legacies OF DISTINCTION

- |  |   |
|--|---|
| Carole & Carl Schmieder                            | Maurice Tatelman, MD                    |
| Nancy & Phil Schneider                             | Elsa Taylor                             |
| Elizabeth Schrader                                 | Linda & Bob Teal                        |
| Betsy Scrivner                                     | Nancy J. Templin                        |
| Katherine Seastone                                 | Gene H. & Cheri L. Thomas               |
| Jean & Dick Segil                                  | Annette J. Thornton                     |
| Evelyn & Charles Severy                            | Dorothy Totten                          |
| Alan R. Sewell                                     | Sandy & Frank Trznadel                  |
| Col. & Mrs. A. Park Shaw, Jr.                      | Evelyn H. & H. W.                       |
| George F. Sheer & Jane<br>Evans Sheer Family Trust | "Bill" Van Loo                          |
| Ann Shideler                                       | Mrs. Robert E. Vance                    |
| Serena & Eli Shtabsky                              | Mr. & Mrs. Oliver<br>Goldsmith Vinnedge |
| Arthur N. & Laura A. Sieburg                       | Ann & Carlos Wagner                     |
| Mr. & Mrs. Herman Siegel                           | Lester A. Walker                        |
| Patricia Dickinson Simmons                         | Frank A. & Sara Jane<br>Wasilewski      |
| Robert L. Sinclair                                 | Kenneth & Marjorie Watters              |
| Mary & Lee H. Slater                               | Anna Weinold                            |
| Joanne M. Smith                                    | Jim Wells                               |
| Joe & Madonna Smyth                                | Linda & Bill Werner                     |
| Dr. Bertram & Edna Snyder                          | Sandy & Lou Werner                      |
| Evelyn Sowell                                      | Keith Wetzel &<br>Suzanne Painter       |
| Michelle & Craig Steen                             | Dr. Paul & Cecile D. Whitaker           |
| Winifred M. & Herman<br>O. Steinke                 | Keith & Florence Wibel                  |
| Rosamond & Joseph Stern                            | Robert W. Willacker                     |
| Becky Curtis Stevens                               | Don Williams                            |
| Virginia G. Stewart                                | Mr. & Mrs. Robert A.<br>Williams, Jr.   |
| Alice & Ralph M. Stivers                           | David J. & Mary Ann Winter              |
| Anna Louise & Robert Stout                         | F. Keith & Patricia A.<br>Withycombe    |
| Mr. & Mrs. Ralph Straus                            | Dr. Judith G. Wolf                      |
| Carolyn & John Stuart                              | D. Ronald & Joan Yagoda                 |
| Michel A. Sucher, MD                               | Dr. & Mrs. H. W. Yamanouchi             |
| Grace B. Sullivan                                  | William G. Young                        |
| ShirleyAnn & Raymond<br>Sullivan                   | Kathy Zeblisky                          |
| Emily Sutton                                       | Louise & David Zirretta                 |
| Mr. & Mrs. F. C. Swain                             | The Ziska Family                        |
| Robert Swayne                                      | Marlene & Lee Zuker                     |
| Ruby & E. C. Sweet                                 | Anonymous (37)                          |
| Barb & Lloyd Swift                                 |   |

## IN REMEMBRANCE

The impact of their gifts and their friendship endures.

Please visit [HonorHealthFoundation.org/inremembrance](https://HonorHealthFoundation.org/inremembrance) where we fondly remember those in our Circle of Distinction donor family who are no longer with us.



# EMPLOYEE LEADERSHIP

*giving*

Special recognition of HonorHealth Employees who not only serve their patients and community with expertise and compassion but also made a 2021 Leadership gift to HonorHealth Foundation through the Honored to Help Employee Annual Giving Campaign.

- |                           |                       |                    |                             |
|---------------------------|-----------------------|--------------------|-----------------------------|
| Abdulkarim Abushaaban     | Elizabeth Farhart     | Steven London      | Amy Plummer                 |
| Celina Acevedo-Adams      | Patricia Foley        | Mary Luster        | John Pope, MD               |
| Joshua Andrade            | Pamela Foster         | David Mada         | Mary Poquette               |
| Ethel Angeles             | Shannon Fox Fraser    | Judith Madura      | Kimberly Post               |
| Stephanie Arnold          | Wayne Frangesch       | Stephanie Mahrer   | David Price                 |
| Gary Baker                | Gary Frank, MD        | Eric Main          | Bruce C. Puryear, MD        |
| Susan Barrett             | Bonnie Frazier        | William Maloney    | Priya Radhakrishnan, MD     |
| Virginia Beard            | Lori Funke            | Deana Manning      | Kristine Reid               |
| Deanna Bell               | Colleen Giggey        | Lalit Mansukhani   | Lisa Replogle               |
| Cheryl Belongie-Brown     | Ronald Gingrich       | Pamela Marquis     | Deborah Rittenhouse         |
| Michael Biegelman         | Melissa Grant         | Sharon Matlock     | Karen Roddy                 |
| Melissa Blake             | Shannon Gray          | Kevin McCabe       | Therese Rogers              |
| Erkut Borazanci, MD       | Lisa Guida            | Patricia McCormick | Victoria Romero             |
| Emily Borlas              | Debra Harmon          | Simon Mercado      | Adam M. Sabbath, MD         |
| Jolene Boydston-Letzler   | Jenifer Hendrix       | Norene Miel        | Sue Sadecki                 |
| Rick Brady                | Susan Hoffmeister     | Jan Miller         | Lori-Ann Satran             |
| Melanie Brewer, DNSc      | Dona Hofmeister       | Timothy Miller     | Jo Schick                   |
| Christa Brothers          | Glynn Hollis          | Tim Mislan         | Shannon Schillereff         |
| Tammi Burns               | Stephanie Jackson, MD | Gwen Mizerik       | Ginny Schoffelman           |
| Belle Butler              | Jamie Jaruvangsanti   | Sonia Mohl         | Donna Sells                 |
| Lisa Campbell             | Shaun Java            | Lynn Moreno        | Amanda Shackelford          |
| Fanny Chan                | Crystelle Johnson     | Justin Moser       | Amanda Shah                 |
| Kelly Chávez-Allen        | Kimberly Johnson      | Charlene Murray    | Patricia Shannon            |
| Bennie Clonts             | Rebecca Katt          | John Neil, MD      | Brian Sidoti, MD            |
| Joseph Cook               | Cynthia Kegowicz, MD  | Corey New          | Richard Silver, MD          |
| Elena Costin              | Riana Kielly          | Julie O'Hara       | Robin Siverts               |
| Christine Covell-Granberg | Christine Kontgas     | Monica Onarheim    | Mark Slater, PhD            |
| Robert De La O            | Jared Langkilde       | Brigitte Opara     | Joanne Smith                |
| Maria Dennis              | Todd LaPorte          | Paul Ophaug        | Mary Smith                  |
| Katherine Dykes           | Todd Larson           | Linda Ott          | Sarah Snell, MD             |
| Donna Egnatios            | Michelle Laverman     | Michelle Pabis     | Debra Souvay                |
| Tracy Eitner              | Aletheia Lawry        | Sara Pederson      | Debra Stevens               |
| Pat Elder                 | Margaret Leichtfuss   | Francisco Peña, MD | Lorna Tan                   |
| Amy Elliott               | Ashleigh Leite        | Tanya Perez        | Derek L. Thompson, MD, FACP |
| Margaret Ewald            | Steven Logan          | Terri Perillo      | Kathy Vaught                |
|                           |                       |                    | Corina Veatch, MD           |
|                           |                       |                    | Joel Vignaroli              |
|                           |                       |                    | Joe Villa                   |
|                           |                       |                    | Lugh Ward                   |
|                           |                       |                    | Julie Washington            |
|                           |                       |                    | James Whitfill, MD          |
|                           |                       |                    | Rebecca Wiesner             |
|                           |                       |                    | Janet Williams              |
|                           |                       |                    | Lynn Woodruff               |
|                           |                       |                    | Ronald Yeager               |
|                           |                       |                    | Deedra Zabokrtsky           |
|                           |                       |                    | Pixie Lea Zagarrigo         |
|                           |                       |                    | Kathi Zarubi                |
|                           |                       |                    | Eric Zuhlke                 |
|                           |                       |                    | Barbara Zwiener             |

# Gifts IN MEMORY

Gifts in remembrance of a special family member, friend or colleague in 2021

**Joyce Adams**  
Roger Adams

**Laura Allison's Brother**  
Valerie & Sheldon Ettinger

**Laird Anderson, Jr.**  
Kathleen Anderson  
Chestnut Cambronne  
Lisa & Mark Holsten  
Fred Kreider  
Karen Locken  
William Macklin  
Chris Madson  
Anne & John Sand  
Nancy Silesky  
Maude Young

**Mahindokht Ansari**  
Saeed & Marjan Behbahani  
Nick Eskandari  
Roya Fardoust  
Fereshteh Katebi  
Faranak Niknam  
Mimika & Edward Nusrala  
Ali Sherkat

**Iva Argabright**  
Debbie & Marc Argabright

**Dennis Austin**  
Kathleen Austin

**David Eugene Beller**  
Lu Ann Beller

**Elouise Beveridge**  
Valerie & Sheldon Ettinger

**Ardis J. Blumenthal**  
Valerie & Sheldon Ettinger

**Kaye Boland Boesch**  
Eileen Mitchell

**Daniel Boisvert**  
Karl Weber

**Donna Brady**  
Deborah & Dale Rittenhouse

**Daniel Broadbent**  
Cindi Barry  
Kelli Woods

**Bill Brun**  
Kelley & Keith Reese

**Hunter Wynn Bushey**  
Sheila Galligan  
Barbara Murray  
Michael Murray

**Denice Caldwell**  
Jeffrey & Mary Ehret

**Shaun D. Cantrell**  
Mary Cantrell

**Janis Carnegie**  
Michael & Nancy Lyon  
Lucretia Woolf

**Janet Carpenter**  
Peter Carpenter

**Jimmy Lee Carsley**  
Michael & Heather  
Greenbaum

**Elena Chavez**  
Beth Fox

**Robert D. Cleland**  
Teresa & Jay Cleland

**Carl Clingman**  
David Fauser

**Jerry Coffman**  
Marilyn Coffman

**Shirley Cohen**  
Ellen Fradin

**Candy Colling**  
Priscilla Wahl

**Roy Corbett**  
Toby Ambrose

**Bruce Corey**  
James Allen Woodman

**Owen Cospier**  
Jennifer & Brian Cospier  
Joan & Dave Cospier

**Robert D. Critton**  
Margaret & Donald Austin

**Donald A. Davis, MD**  
Jeanne Davis

**Jane De Marche**  
Jean Davis

**Hazel Demry**  
Judy Tometich

**Franklyn Dennis**  
Anne Dennis-Copsey

**Peggy Downing**  
Carole & Mac Baade

**Robert Dunn**  
Sansone Family

**Margaret H. Eckard**  
Bonnie Eckard

**Linda Eggleston**  
Ronald Eggleston  
Paradise Valley DAR  
Judie & Chuck Sinclair  
Bill & Nancy Yates & Families

**Wilma Elder**  
Randy & Pat Elder

**Mary Elrod**  
Charles Elrod

**Sharon Evans**  
David Fauser

**Joan Farcasanu**  
Altour Delaware, LLC

**Moody M. Farhart**  
Bonnie Farhart

**Christina Ferrero**  
Lori Walk

**Ryan Alan Fitzgerald**  
Sheila & Alan Fitzgerald

**Fred Forino**  
Jane Forino

**Kristin L. Franklin**  
Linda Luth

**Lisa Franze**  
Judy & Mike Franze

**Jerald "Jerry" Frieling**  
Iris Frieling

**LTC Myron Eric Furbee**  
Ruth Furbee

**Sofia Lily Gallagher**  
Amy Burgholzer  
Judy & Tom Burgholzer  
Marcia Carroll  
James Gallagher  
John Gallagher  
Michael Gallagher  
Cathy & Ron Gallagher

**Linda George**  
Cindy Maher  
Joan Mitrius  
Daniel Sheehan

**Sheila Gerry**  
Vivian & George Flores  
Richard Gerry  
Robert Langer  
Kerry & Jody Pokorski

**Brenda and Chad Gettys**  
Rita King & Timothy Keneipp

**Alex Gibbs**  
Trina Gibbs

**Neil Gleeman**  
Valerie & Sheldon Ettinger

**Herbert Gold**  
Michael & Heather  
Greenbaum

**John V. Gosule**  
Mary Gosule

**Mary Adrienne Graves**  
Frances & Richard Lamden

**Mark Grenoble**  
AHLA Resort Committee  
Christina Baxter  
Enchantment Group

Patricia Marange  
McCabe O'Donnell, PA  
Robert Meissner  
Eileen & William Meurer  
Kimberly Miles  
Northern Arizona University  
School of HRM  
Mark Novota  
Tang Family  
Brigitte Weinrott  
Nancy & Yung Wong  
Carol & Thomas Wornom  
Sara Zeumer

**Thomas F. Griffin**  
Sheila & Joseph Brova  
Katherine Dorsa  
Rochelle Jones  
Meg Langley  
Emily Wu

**Chester L. Hansen**  
Tim & Janet Klimuck

**Carl L. Haynes**  
Margery & Rex Porter

**William Hepperle**  
Patricia Hepperle

**Lottie and George Hernandez**  
Richard Carlberg

**Shirley Hershey**  
Shari Boockvar  
Judith & Louis Ennis  
Gary & Gail Farber  
Beth & Andrew Fromkin  
Barbara Hershey  
Bari Kalinsky  
Karen Lee  
Marcy Maguire  
Bruce Marcus  
Deborah & Dale Rittenhouse  
Diane & Richard Ross  
Lorin Schneider  
Iris Schubert

**Kim E. Higham**  
Diana Baker  
Karla Farber  
Mark Johnson  
Nancy Jordan  
Susan & Ron Megli  
Peni Northcott  
Earnest & Virginia Pohl  
Kurt Schueler  
Nancy Seltzer  
Maria & Louis Taravella  
Mary Wilson

**Colonel Richard P. Hill, MD**  
Lisa Hill

**Skip Holt**  
Robert Lavinia

**Millie Hudson**  
Terry McGrath

**Susan Hudson**  
Anne Bolstad

**Helen Hutchison**  
Michael & Heather  
Greenbaum

**Gregory Leonard Johnson**  
Mary Boston  
Kathie & Frederick Johnson

**Paul M. Johnson**  
Carol & Gregg Johnson

**Kathy Kanouse**  
Priscilla Wahl

**Carolyn Z. Kaplan**  
James Kaplan  
Carol Wavrin

**David Keane**  
Thomas Malley

**Andrew Graham Kent**  
Polly Kent-McAllister

**Marilyn Kevern**  
Ronald Kevern

**Helena L. King**  
Golda King

**Dalton Knauss**  
Candice & James Unruh

**Sensei Shojiro Koyama**  
Stephen Behrens  
Albert Ikeda  
Barbara & John Olson  
Erin Prange  
Junko Shimazaki

**Dorothy M. Lambe**  
Laurel & Clarke Lambe

**Ruth Lavinia**  
Janine Rutherford  
Bryant Santini

**Larry Levinson**  
CB Wooldridge

**Sy Liebman**  
Jayne & Allan Siegel

**Zachary Lipof**  
Toby Ansin  
Laurie & Raymond Ball  
Robin & Matthew Barron  
Brenda Becker  
Tracy Burns  
Pauline & Howard Churwin  
Paula Cohen  
Sharon Cohen  
Debbi & Michael Cutler  
Carole & David Decter  
Jennie & Stephen Denison

Tia Disick  
Andreae Downs  
Howard & Hope Feinberg  
Shana Feinberg  
Susan Fliegel  
Scott Friedman  
Karen Garb  
Jared & Julie Gollob  
Robert Gopen  
Spencer Gould  
Lawrence Green  
Craig & Marcia Grosswald  
Cynthia Gruber  
Lily Jung  
David Kanter  
Joseph Kennedy  
Knollwood Cemetery/  
Sharon Memorial Park  
Darby & Jonathan Kominik  
Robert Korff  
Law Office of  
David A. Miller, PC  
Judy & Howard Levine  
Jayne Lewis  
Julie Lipsett &  
Stephen Feinberg  
Wendi Lovenvirth  
Jeanine Lyles  
Ryan Lyles  
Deb Mann  
Edward Mann  
Theodora & Marc Najarian  
Stacey Nevins  
Karen OBeirne  
Maureen, Ben, Anna  
& Cameron Parsons  
Richard & Sheila Perlman  
Carole & Arnold Pressman  
Robert Regan  
Marcia Ross  
Donna Rubenoff  
Amy & John Sangiolo  
Carolyn Schofield  
Melissa & Howard Schwartz  
Sheila Schwartz  
Karen Segel  
Sheila Selby  
Shelley Shapiro  
Paula Shifman  
Jon & Melissa Shore  
Sisterhood of Temple  
Ohabei Shalom  
David & Jennifer Smelson  
Jodi Sokoloff  
Ernst Terhaar  
Cynthia Theodos &  
Joseph Sypek  
Dorothy Unger  
Wendy & Jonathan White  
Tom Wiggin  
Leslie & Mark Worris  
York & Piche Families  
Henry Zachs

**Mary E. Lockett**  
Derald Dougherty

**Jon C. Madonna**  
Sheryl & Robert D'Amico

**Larry Mason**  
Francina Goldberg

**John Massaro**  
DC Cox

**Barbara McIlvain's Aunt Ruth**  
Valerie & Sheldon Ettinger

**Steven Mielke**  
Jeanine Mielke  
Cenus Nichols  
Linda & Larry Nichols  
Deborah & Dale Rittenhouse

**Carlyle Miller**  
Dan Kammrath

**Frank Miller**  
Terry & Mary Ellen Gould  
Michael & Margaret  
Leichtfuss  
Alice & Charles Palmer  
Sharon Powell  
Deborah & Dale Rittenhouse

**Larissa Minicucci**  
Patricia Shannon

**McKenna Moreno**  
Edward Gile

**Shirley Moroney**  
Min Yu

**Mary Kay Morrey**  
Francina Goldberg

**Lynne Mott**  
Margaret & Frank Bell  
Sandra Mayhew  
Leanne Reynolds

**Donald Mulholland**  
Marthajane Mulholland

**Martin Nodilo**  
Patsy Nodilo

**Kyle Nolan**  
Doris Nolan

**Orval Nutt**  
Carol Albers  
Margaret & Donald Austin  
Gerald Baker  
Jane & Dave Bernthal  
John Champe  
Paula Sue & Ronald Dial  
Christine & Glenn Gienko  
Deanna & Thomas Jones  
Myrna & Michael Kelly  
Mary & Steve Leone

# gifts IN MEMORY

## Continued

Grace & Edward McGarrity  
Diane & R. Dan Nelson  
Elyse & William Newton  
Jo Ann & Douglas Redding  
Deborah & Dale Rittenhouse  
Sandy & Paul Skoog  
Christine & John Suppes  
Larry Winter

**Lori Ohmes**  
Shirley Fredricks

**Our Mothers**  
Madhav & Courtney Ranjan

**Frank Pasqua**  
Sallie Barbier  
Aimee & Erkut Borazanci  
Kevin Brandom  
David Couvillon  
Frank J. Pasqua  
Sandra Pasqua  
Ann & Daniel Von Hoff

**Beverly Jean Peterson**  
Elizabeth Zimmerman

**Savas Petrides**  
Gail & Neil Switsky  
Terry Switsky  
Barbara Traum

**Lois Phillips**  
Valerie & Sheldon Ettinger

**Tina Poke**  
Francina Goldberg

**Lloyd W. Powell**  
Sharon Powell

**Nate Prewitt**  
Admire Plastic Surgery, PLLC  
American Fence Association  
Kristi Anderson  
Margaret & Donald Austin  
Bobby Blake  
Melissa Blake  
Danielle & Zachary Castle  
Todd Cretors  
Robin & Richard Donnelley  
Laurie & Warren Florkiewicz

Janet Foster  
Iris Frieling  
Linda Gabriel  
Patricia Gates  
Michael & Heather Greenbaum  
David Gregg  
Lisa Guida  
Trudy & Calvin Hahn  
Eileen Hatfield  
Lauri & Michael Hawes  
Nancy Hays  
Jo-an & Steve Holstein  
Wally Hunt  
Leslie Jannasch-Warner  
Joan & Claburn Jones  
Amy Jump  
Joan Kaminski  
Cindy Kelly  
Tracy & Joe Kross  
Michael & Margaret Leichtfuss  
Jeanne & Roger Magowitz  
Lori McClelland & Michael Harris  
William Michaels  
Jan Miller  
Patricia & William Naumann  
Alice & Charles Palmer  
John Papez  
Judith Par  
Valerie & John Pihl  
Sharon Powell  
Dan Puthuff  
Deborah & Dale Rittenhouse  
Rita & Richard Russell  
Marcia Schafer  
Jeffrey G. & Barbara Schlein  
Diane & Dwayne Sterner  
Debra & Christopher Stevens  
Robynn & Robert Sussman  
Mary & Frederick Tucker  
Kathleen & Robert Wade  
Kathy Zeblisky

**Douglas Pruessing**  
Anne Pruessing

**Gann Ralston**  
Edgar Ralston

**June Rector**  
Wendy Godfrey  
Jane Kinneberg  
Gordon & Marilyn Peters  
Realty Executives International  
Susan & Thomas Reeb  
Deborah & Dale Rittenhouse  
Janis Ross  
Kathy Stieg

**Frederick B. Rentschler**  
Pamela Rentschler

**Dominic Romeo**  
Michael Hagan  
Sherri Linsenmann & Mary Webber  
Jody Wenger

**Pat Ross**  
Beverly & Robert Hechler

**John Sabga**  
Natalie Sabga

**Charles Saletta**  
Anne Saletta

**David Schlang**  
Dayna Schlang

**Cynthia Seegraves**  
Dante Terrana

**Jacqueline Sencion Cortes**  
Diego Segura Sencion

**Tony Sierra**  
Branka Sevarlic-Sierra

**Michael A. Signa, Jr.**  
Randy & Pat Elder  
Anonymous (1)

**Paul Smith**  
Berry Riddell LLC  
Patricia Hawkins  
Kevin Hughes  
Marcia & Newton Lee  
Joan Roberts

**Bill Sniro**  
Deborah & David Mendelson

**Marc Dennis Strozzi**  
Hank & Barbara Cipolaro

**Frank Stuart**  
Shireen Malouf-Stuart

**Bryan Dean Takesuye**  
Betty & Jack Takesuye

**Madeleine Talkington**  
Kenneth Epstein  
Kevin Radzysinski  
Fran Schlenoff

**Frances Adele Venn Hahne**  
Patrick & Susan McGroder

**Vicki**  
Alina Augustin

**Anne Walker**  
Lester A. Walker Foundation

**John David Warfield III**  
Mary Emert  
Joan Warfield  
Michele Woodard

**Daisy Watts**  
Linda & Jamie Watts

**Robert Weis**  
Stewart Barmen  
Susan Beckerman  
Sandy & Patti Berman  
Davie & Jackie Bialosky  
Amy Block

Diane & Michael Brown  
Francine Caplan  
Nancy & Jay Chodock  
Margaret Cohen Voss  
Phyllis Cohen  
Priscilla & Louis Cohen  
Richard Cohen  
Mandy & James Daitch  
Lisa Dalachinsky  
Michelle & H. L. Dameshek  
Marilyn Davis  
Keri Eckstein  
Richard Fleischman  
Amy & Thomas Fortner  
Alison Friedman  
Marilyn Gerber  
Carol & Ted Goldberg  
Vicki Goldberg  
Marcia & David Gordon  
Susan Hartman  
Evelyn & Seymour Holtzman  
Melissa Horlick  
Lynn & William Hurwitz  
Robert Kaplan  
Steve & Susan Kaufman  
Elaine & Joel Kellmanson  
Myrna Kline  
Nina Kotzen  
Stanton Levenson  
Beth Levy  
Jesse & Carol Mantel  
Janet Markel  
Herbert Meyers  
Sharon Miller  
Lynn & Charles Mills  
Zola Munter  
Terri Polacheck  
Helene & David Pollock  
Joyce Rawle-Barniker  
Berman  
Diane Recine  
Sally & Fred Rock

Caryle & Stuart Rosen  
Janice Rosenberg  
Abby Ruttenberg  
Barbara Sachnoff  
Mendlowitz  
Ginger Schwartz  
Patti Shansa  
Ilene & Joel Shapiro  
Lynne Siegel  
Susan Silversmith  
Laurel Swartz  
Alan Weill  
Edris Weis  
Susan Weis  
Charles Weisberg  
Richard Weisman  
Judy Whitman  
Linda & Ronald Zatman  
Myrna Zelenitz

**Sandra Chan Whitehouse**  
Deanna Nielsen  
George Whitehouse

**Susan Wiesenberg**  
James Wiesenberg

**Stuart Wildstein**  
Eleanor Wildstein

**Richard Wing**  
Barbara D. & Dan Zwiener

**Mary Boland Woeste**  
Eileen Mitchell

**Gail Yamaguchi**  
Kelley & Keith Reese

**Phil Zeblisky**  
Martine Beachboard  
Connie Dellis  
Linda Gabriel  
Dawn & Brett Olson  
Theresa & Michael Petaja  
Natalie Sabga  
Janice Schachter  
Sophie Zeblisky

# gifts IN HONOR

Gifts in honor of a special occasion or achievement in 2021

**Diana Abel**  
Lori Walk

**Susan Adams**  
Sophia Chiang

**Diedre Alexander**  
Diane Alexander  
Todd Alexander  
Steve Alpert  
Julie Barnes Weaver  
Jennifer Beatty  
Greg Belknap  
Lesley Bergquist  
Myra Berman  
Blondie Wolfe & Associates  
David Brower  
B. B. & John Bullion  
Jane Burnett  
Barbara Como  
Brad Corrion  
Diane & Dick Cromwell  
Brian Diederich  
Elisabeth Diederich  
Linda & Douglas Diederich  
Nicole Diederich  
Shannon Diederich  
Myrtle Doering  
Carol & Jim Erickson  
Mitch Etter  
Sally Euson  
Christine Finn  
Joann & Daniel Gallichio  
Betty Garborg  
Joyce Garcia  
Donna Gears  
Jo Gemmill  
Diana Gericke  
Terry & Jerry Guirey  
Laura Hawkes  
Ann Hawkinson Gavin & Michael Karaman  
Martha & Peter Hendrickson  
Kristin Henning Bartel  
Melissa Hield  
Nancy Holtbrook-Sanderson

Yvonne Jenny  
Randy Johnson  
Ellen Joseph  
Lesley King & Paul Imlej  
Jennifer Kirkeby  
Terrell Lamb  
Ellen Liberto  
Marlene Loring  
Ashley Mabbitt  
Deborah MacDonald  
Camilla Madson  
Eran & Stephanie Mahrer  
Judy Martens  
Frank McCollom  
Constance & James McDonald  
Jean McIver  
Jim McNulty  
Elizabeth Menacher  
Donna Moore & Tim Emerson  
Pamela & James Moreland  
Pauli Morin  
Eileen & Richard Nygard  
Steve Obaid  
Patricia Ophaug  
Sara Oswald  
Maria Parthun Adams  
Katherine Patrick  
Bronwyn Pedano  
Paul Carley Peterson  
Thomas Potter  
Cindi Sanders  
Cindy Schaidler  
Susan Scott  
Marcus Seraphine  
Amy & Jeff Smith  
Margaret Smith  
Anne Snyder  
Christy Speirn-Smith  
Petey Swartz  
John Trucano  
Eileen Van Cott  
Lori Vander Maten  
Alex Versluis

Joanne Ward  
Jodi Willnow  
Steven Wilson

**All Breast Cancer Survivors**  
Jacqueline Genrich

**All Caregivers**  
Marcia Balestrino

**Janice Apple**  
Nancy & Steve

**Kenneth R. Baker**  
Lucy Henney

**Knox Beck**  
Jessica Beck

**Stella Beck**  
Jessica Beck

**Karen Bennett**  
Deborah Batjer  
Sheila & John Scates

**Dr. John Beshai**  
Gunilla & Lars Isaksson

**Mike and Eli Biggs**  
Alicia Illidge

**Terry Bollinger**  
Paul Sieczkowski

**Tom and Christa Brothers**  
Julie Martin

**Dr. Brad Bruns**  
Jessica & Lindy Funkhouser

**Drs. Jennifer and Robert F. Burke**  
Gunilla & Lars Isaksson

**Sebastian Burritt**  
Julia MacDonald

**Parker Callingham**  
Richard Callingham

# gifts IN HONOR

**Kate Cantelme**  
Sandra & Patrick Cantelme

**Dr. and Mrs. Franco Castro-Marin**  
Drew Kaufman

**Elena Chavez**  
Lynn Kepp

**Ethel Chiang**  
Sophia Chiang

**Susan Chiang**  
Sophia Chiang

**JoAnn Cleland**  
Paula & Carl Crawford  
Roni & Doug Hooper

**Richard Clement**  
Lisa & Howard Luber

**Robert and Carol Collins**  
Robert Rehak

**Donald Cotrell**  
Matthew Kramer

**Danny Craig**  
Greg & Susan Loewen

**Robert Creager**  
Kimberly & James Burke

**Richard A. Culton**  
Betty Culton

**Tess Daley**  
Shirley & David Clemens

**Elle Davis**  
Mark Steven Visina

**Carmel Dean**  
Paula & Carl Crawford

**Tricia DeJean**  
Linda Gionta

**Desert Mission Volunteers**  
Sandra Loucks

**Caden Dirvonas**  
Lorna & Terrance Simonson

**Jennifer Aline Dixon**  
Viola Wallace

**Judi Edwards**  
Allen & Cheryl Kaplan

**Sara K. Elia**  
Joey J. Elia

**Alan A. Elkins**  
Susan Fry

**Marda Emery**  
Priscilla Wahl

**Robin Eveland**  
Priscilla Wahl

**Curt Feuer**  
Myrtle & Gordon Wolman

**Kristin Frey**  
Miriam Mertel

**Dr. Jay Friedman**  
Linda & James Landers  
Merle Shapiro

**Dr. Bernard Gburek**  
Jessica & Lindy Funkhouser

**Michael Gordon**  
Deborah & David Mendelson

**James Goughnour**  
Joseph Mignacca

**Terry and Mary Ellen Gould**  
MaryAnn & Lionel Lucchesi

**Laura Grafman**  
Shannon & Robert Goldwater

**Lecia and Robert Greco**  
Phyllis & Stanley Green

**Graham Charles Grogan**  
Mary Jo & Jim Grogan

**Kathleen Hagen**  
Michelle Hofford

**Hardworking caregivers  
and support staff of  
HonorHealth**  
Sandra Loucks

**Linda Hausman**  
Lori Walk

**Susan J. Hayden**  
Lindsay Watt

**Sandy Headstream**  
Lori Walk

**Tim Holly**  
John O'Connor

**HonorHealth Medical Staff**  
Judith & Moshe Bukshpan  
Lynn LaVoy

**HonorHealth Osborn Nurses**  
Alfred & Jan Ghelfi  
Thomas Sliskovich

**HonorHealth Pharmacy  
Team**  
GraphiteRx

**Mina Huisman**  
Tiffany Huisman

**Joan May Jordan**  
Anita & Mark Jordan

**Jana Judd**  
Linda Gionta

**Vivek Kalra**  
Ruchi Kalra

**Phyllis Kaminsky**  
Steve & Dorothy Gaynor

**Howard Katz**  
Rosellen & Harry Papp  
Bud & Sue Selig

**Dr. Imad H. Khaled**  
Fariba & Bijan Ansari

**Leezie Kim**  
Colleen Shannon &  
Scott Grane

**Courtney Kinney**  
Sarah Martin

**Zoe Kite**  
Barbara Kite

**Dean and Nancy Klarr**  
Rex & Margie Porter

**Harriet Kriegsfeld**  
Daniel Gold

**Tom Kunkle**  
Daniel Buzo

**Dr. Douglas Lakin**  
BBR Foundation

**Jared Langkilde**  
Graziano & Deborah Bertini  
Peter Carpenter  
Alyce & Dennis Helfman  
Susan & Bob Lee  
Merrill McLoughlin &  
Michael Ruby  
Pamela Ramsey  
Emily & Mike Santellanes  
Judith Wolf

**Nancy S. Lash**  
Harvey Lash

**Richard Lesser**  
Diane & Jay Simons

**Mariette Levy**  
Alan Levy

**Alfredo Lim, MD**  
Betty Smith

**Eileen Lonsberry**  
Priscilla Wahl

**Stacy and Mike Lovell**  
Tami & Aaron Caplan

**Michael Mackey**  
Miriam Mertel

**Tony Mackey**  
Miriam Mertel

**Mary Beth Maddox**  
Priscilla Wahl

**Nolan Maduros**  
Catherine DeLange

**Jodi and Joe McKenzie**  
Daniel Gold

**Janet Meador**  
Robin & Terence Roche

**Jodi Lynn Melidoni**  
Valerie & John Pihl

**Jan Miller**  
Alice & Charles Palmer

**George Mitchell**  
Karen DuBose

**Jim Mitchell**  
Rae Mitchell

**Manish Mota**  
Monika Stuber

**Hala Nakasha**  
Linda Gionta

**Bruce and Nancy Newberg**  
Joan Goodman

**Michele Nims**  
Stephanie Wolf

**North Central News  
Advertisers**  
North Central News, Inc.

**Judy Ohnsman**  
Douglas Smith

**Marcia and Buddy  
Perlmutter's 60th  
Anniversary**  
Norma Katz

**Becky Peterson**  
Linda Gionta

**Valerie Pihl's Birthday**  
Sue Woodyard

**Dr. T. Plier**  
Gunilla & Lars Isaksson

**Pointe Tapatio Knit & Stitch**  
Debera Parker

**Dr. Jack Poles**  
Elizabeth Crinejo &  
Andrew Poles  
Thomas Glasser  
Daniel & Suzanne Klausner  
Emy Waugh

**Ruth Poles**  
Elizabeth Crinejo & Andrew  
Poles

**Maddie Pollack**  
Hoard Abrams

**Joyce Powers**  
Priscilla Wahl

**Carole Lee Randall**  
Thomas & Denise McClain

**Janis and Jim Raynak**  
Vista Thompson

**Dr. Christine S. Reuss**  
Trish Stark

**Dr. David Rizik**  
Starr & Ira Edelson

**Run Your Race AZ**  
Shawn Chambers

**Ann Sausedo**  
Robin & Terence Roche

**Shannon Schillereff**  
Trevor Bragg

**Sherrie Schmidt**  
L. Kathy Herre

**Renee Schwartz**  
Stephen Schwartz

**Dr. Maulik Shah**  
Doris & Eliot Minsker  
Jeffrey G. & Barbara Schlein

**Phyllis Sharp**  
Judy Tometich

**Tina Sheppard**  
Thomas & Denise McClain

**Kevin and Darby Shipman  
Family**  
Sarah & Michael Shipman

**Stacie Sholer**  
Erin Baldwin  
Cindy Brazee  
Hope Childree  
Angela Cook  
Jay Jennings  
Alyn Rumbold  
Cynthia Sandberg  
Viking Specialty Contracting  
David & Karen Watkins  
Roger Wright

**Jenn Flynn-Shon and Matt  
Shon**  
David Fitzpatrick

**Fred L. Sixta**  
Carolyn & David Maehling  
Vickie Sixta

**Joseph E. Smith**  
Cheryl Smith

**Laura Smith**  
Douglas Smith

**Dr. Sarah Snell**  
Michael & Margaret  
Leichtfuss

**Maya and Jacob Snyder**  
Jeff & Corliss Bleaman  
Bobbie & Robert Falk  
Henry Kuller  
Linda & James Landers  
Arleen & Carl Leichter

**Victor Springer**  
Wendy & David Scherl

**Baby Stewart**  
Susan Dobbins  
Francesca Engler  
Stacey Lamot  
Laura Levin  
Lesley Propp  
Sharon Ronstadt

**Kathie and Bryant Stooks**  
Kimberley Campisano

**Beth Ames Swartz**  
Drew Kaufman

**The Downing Family**  
Valerie Sypula

**Aaron Talamantes**  
Rosanna Elting

**Dr. Siva Talluri**  
Gunilla & Lars Isaksson

**Those who have lost the  
battle to breast cancer and  
those who continue to fight**  
Debra Sloan

**Those whose lives  
have been affected by  
breast cancer**  
Oasis Community Church

**Michelle Tom and Jonas  
Gamso**  
Mi-Ang & Stephen Tom

**Steve and Barbara Trethewey**  
Pixie & Chuck Zagarrigo

**Sally Tryhus**  
Patricia Gates  
William & Julie Lavidge

**Dr. Lee M. Ugol**  
Wendee Johnson

**Dr. Corina Veatch**  
Sherry Myers

**Dr. Gianni Vishteh**  
Sally Everett

**Dr. Daniel D. Von Hoff**  
Marilyn Coffman

**Kathy Wade**  
Richard Gerry

**Julie and Thomas Walker**  
Susan Baxter

**Christine Watson**  
Patricia Gates  
William & Julie Lavidge

**Pamela S. Wight**  
Peter Huddleson

**Conrad Wyatt Wirtjes**  
Rene Wirtjes

**David Wood**  
Meredyth Corbett

**Lauren Wyler**  
Daniel Tellers

**Yahweh**  
Dianna Sarmiento

# Ovation

A way to applaud your care team.

## Cheers to the Teams that Provide Exceptional Care



When you—or someone close to you—receives exceptional care at HonorHealth, it feels good to express your gratitude. The very act of recognizing your care team creates a sense of meaning, fulfillment and even healing.

Through Ovation, the HonorHealth Foundation grateful patient program, you can pay tribute to the HonorHealth caregivers that made a difference through their care, compassion and commitment.

Saying “thank you” is easy and makes a world of difference to the HonorHealth team:

1. Submit a personal message of thanks to your care team online. You can choose to include a donation in tribute.
2. HonorHealth Foundation will send an Ovation card with your message to the caregiver or team.
3. We'll also send a copy to their supervisor to honor them in front of their peers.

Whether words of gratitude or a charitable donation, your gift of an Ovation holds deep meaning for your caregivers. It brightens their day and sustains them during difficult shifts. It reinforces their dedication to this calling.

# PHYSICIAN *partners* IN PHILANTHROPY

We honor their experience and compassion  
extended to HonorHealth Foundation donors

## Allergy/Immunology

Uday K. Reddy, MD  
Jodi L. Rubin, MD

## Anesthesiology/ Pain Management

Tony Bui, MD  
Steven H. Eisenfeld, MD  
J. Julian Grove, MD  
Masoud A. Sultani, MD

## Audiology

Cathy E. Kurth, AuD

## Bariatrics

James M. Swain, MD

## Cancer Transplant

Adrienne D. Briggs, MD

## Cardiology

Kush Agrawal, MD  
Mayur D. Bhakta, MD  
Robert F. Burke, MD  
Pratik K. Dalal, MD  
Nassim Haddad, MD  
Kevin J. Klassen, MD  
Bimal B. Padaliya, MD  
Christina S. Reuss, MD  
David G. Rizik, MD  
W. Scott Robertson, MD  
Adam M. Sabbath, MD  
Gregory P. Sanders, MD  
Maulik G. Shah, MD

## Cardiothoracic Surgery

Michael P. Caskey, MD  
Richard M. Gillespie, MD  
Robert D. Riley, MD

## Dermatology

Nancy H. Kim, MD  
Brenda LaTowsky, MD  
Gary A. McCracken, MD  
Lauren M. Ogrich, MD  
Kelly C. Pearson, MD  
Anthony J. Petelin, MD  
Maya K. Thosani, MD  
Anne Walter, MD  
Yousif Yonan, MD

## Electrophysiology

John F. Beshai, MD  
Rahul N. Doshi, MD  
Thomas A. Mattioni, MD  
Sushmitha Patibandla, MD  
Ashish G. Sadhu, MD  
Mark J. Seifert, MD

## Emergency Medicine

Charles A. Finch, DO  
Steven J. Lipsky, MD  
Douglas J. Smith, MD  
Kurt R. Solem, MD

## Endocrinology

Daniel S. Duick, MD  
Amir E. Harari, MD  
Fida Sawalha, MD

## Family Medicine

Dee A. Allred, MD  
Jeffrey J. Baird, MD  
Jamie L. Beckman, DO  
John S. Bickle, DO  
John A. Bigler, DO  
Dmitry Bisk, MD  
Janelle E. Donaldson, MD  
Christopher L. Finlay, MD  
Louis H. Hagler, MD  
Heather K. Harrison, MD  
Cynthia L. Kegowicz, MD  
Jeffrey D. Leitner, MD  
Mila Lopez, MD  
Steven J. Lugo, MD  
Preet G. Mangat, MD  
Zoe L. McMillen, MD  
David Medunick, DO  
Tiffany C. Pankow, MD  
Laurie M. Pozun, DO  
Kristin J. Shealey, MD  
Paul W. Sieckmann, MD  
William J. Strohman, MD  
Brett E. Swenson, MD  
Robert M. Taxin, DO  
Ira H. Ungar, MD  
Jennifer L. Vanyo-Novak, DO  
Susan S. Wilder, MD  
Alvin G. Wong, MD

## Gastroenterology

S. Jaffrey Kazi, MD  
Gavin N. Levinthal, MD  
Sajiv Sethi, MD  
Akshay V. Shah, MD  
Rucha M. Shah, MD  
Amar J. Thosani, MD  
Stuart L. Triester, MD

## General Surgery

Richard J. Chamberlain, MD  
Laura R. Champagne, MD  
Samedyar I. Durrani, MD  
Peter J. Ferrara, MD  
Rick A. Low, MD  
Elena S. Sibley, MD  
Bianca J. Vazquez, MD

## General Surgery/Breast

Nedra J. Harrison, MD

## General Surgery/ColoRectal

Andrew A. Kassir, MD  
Raed F. Tarazi, MD

## Geriatric Medicine

Jessica M. Berdeja, MD

## Gynecologic Oncology

Mike F. Janicek, MD

## Hematology

Joseph R. Mikhael, MD

## Hematology/Oncology

David Y. Cho, MD  
Brendan F. Curley, DO  
Patrick J. Donovan, MD  
Michael S. Gordon, MD  
Stephanie P. Lindauer, MD  
Jasjit C. Sachdev, MD  
FrankTsai, MD  
Daniel D. Von Hoff, MD

## Hepatobiliary & Pancreatic Surgery

Albert Amini, MD

## Infectious Disease

Christopher C. Crowe, DO  
Aman K. Dalal, MD  
Laura K. Schroeder, MD

## Internal Medicine

Caitlin M. Allen, MD  
Carolyn J. Bordinko, MD  
Jay S. Friedman, MD  
Kenneth F. Horowitz, MD  
Smita Kapoor, MD  
Douglas M. Lakin, MD  
Madonna C. Mallari, MD  
Sadan K. Patel, MD  
Shital K. Patel, DO  
Dana M. Paull, MD  
Brian T. Sidoti, MD  
Richard C. Silver, MD  
James W. Steiner, MD  
Halley C. Sullivan, DO

## Internal Medicine/ Hospitalist

Misty V. Evans, MD  
Nima Ghadimi, MD  
Raad A. Hindosh, MD  
Amy L. Lee, MD

## Nephrology

David M. Burstein, MD

## Neurology

Barry A. Hendin, MD  
Todd D. Levine, MD  
Jill C. Rau, MD, PhD  
Gary N. Reese, MD  
Daniel J. Savitt, DO  
Luay Shayya, MD  
Harry S. Tamm, MD  
Lori Hendin Travis, MD

## Neurosurgery

Brian C. Fitzpatrick, MD  
Bryan S. Lee, MD  
Frederick F. Marciano, MD,  
PhD  
Rory K.J. Murphy, MD  
Luis M. Tumialan, MD  
John E. Wanebo, MD

## Obstetrics/Gynecology

Andrew W. Carter, MD  
Alexandra E. Kidd, MD  
Brenda A. Martin, MD  
Sarah J. Snell, MD

## Ophthalmology

Ali Ghafouri, MD  
Grant W. Heinz, MD  
Jonathan J. Levin, MD  
Robert R. McCulloch, MD  
Paul M. Petelin, Jr., MD  
Randall K. Tozer, MD

## Ophthalmology/Retina Specialist

J. Shepard Bryan, MD  
Sharam Danesh, MD  
David T. Goldenberg, MD

## Orthopedic Surgery

Sarim S. Ahmed, MD  
David S. Bailie, MD  
John K. Bradway, MD  
Michael J. Brennan, MD  
Sean J. Brimacombe, MD  
Judd E. Cummings, MD  
Gregory T. Evangelista, MD  
Perry J. Evangelista, MD  
Theodore P. Firestone, MD  
Keith A. Jarbo, MD  
Bertrand P. Kaper, MD  
Cory O. Nelson, MD  
Matthew W. Russo, MD  
Vincent J. Russo, MD  
Matthew J. Seidel, MD  
Brian L. Shafer, MD  
Stefan D. Tarlow, MD  
Steven D. Werner, DO

## Orthopedic/Foot & Ankle

David E. Jaffe, MD  
John A. Nassar, MD

## Orthopedic/Hand

E. Scott Frankel, MD  
Donald C. Sheridan, MD  
David A. Thull, MD  
Philip To, MD

## Orthopedic/Pediatric

Gregory M. Hrasky, MD

## Orthopedic/Spine

Michael S. Chang, MD  
Edward J. Dohring, MD  
Justin S. Field, MD  
Paul R. W. Gause, MD  
Nima Salari, MD  
Mark J. Wang, MD  
Christopher A. Yeung, MD

## Orthopedic/Trauma

Brian H. Miller, MD  
Gilbert R. Ortega, MD  
Kurtis S. Staples, MD

## Otolaryngology

Samuel S. Bailey, MD  
Kurt E. Heiland, MD  
Daniel B. Hurley, MD  
Brian Gun Lee, MD  
Christopher L. Lykins, MD  
Jordan S. Weiner, MD

## Physical Medicine/Rehab

Harvinder S. Deogun, MD  
Amber R. Hennenhoefler, DO  
Peter K. Kubitz, DO  
Anthony A. Lee, MD  
Ronald S. Quang, MD

## Plastic Surgery

Pablo A. Prichard, MD  
Roni B. Prucz, MD

## Podiatry

Kris A. DiNucci, DPM  
Albert E. Eulano, DPM  
L. David Richer, DPM  
Nima Sana, DPM

## Psychology

Pedro R. Choca, PhD, LISAC

## Pulmonology

Gregory S. Ahearn, MD  
Aditya Gupta, MD  
Irfan Khalid, MD  
Richard S. Levinson, MD  
Kimberly A. Parker, MD  
Bridgett A. Ronan, MD  
Heemesh D. Seth, DO

## Radiation Oncology

Luci M. Chen, MD  
Robert R. Kuske, MD  
Farley E. Yang, MD

## Radiology

Glenn C. Cook, MD  
John K. Crowe, MD  
William W. Horsley, MD  
Ronald L. Korn, MD, PhD  
Rodney S. Owen, MD  
Gavin P. Slethaug, MD

## Rheumatology

Matthew J. Herrmann, MD  
Alan H. Mallace, MD  
Nancy C. Sein, DO

## Urogynecology

Ahmed N. Akl, MD

## Urology

Erik E. Alexander, MD  
Shawn D. Blick, MD  
Ali Borhan, MD  
C. Gilberto Brito, MD  
Daniel E. Cooper, MD  
James A. Daitch, MD  
Michael F. Darson, MD  
Bernard M. Gburek, MD  
Daniel C. Jaffee, MD  
Mitchell C. Kaye, MD  
Lipika R. McCauley, MD  
Robert H. Shapiro, MD  
Howard P. Tay, MD  
Daniel Y. Woodruff, MD

## Vascular Surgery

Curtis A. Erickson, MD  
Nitin Garg, MD  
Venkatesh G. Ramaiah, MD



2021-2022

# HONOR BALL

With its rich 45-year legacy, this gala attracts the Valley's most generous and supportive community leaders who understand that philanthropy is central to advancing innovation, technology and vital programs and services in healthcare today.

With the surges in COVID-19 cases, the 2021 Honor Ball was postponed to February 26, 2022. And it was worth the wait! Under the leadership of chairs Sally Tryhus and Christine Watson, more than 750 guests helped raise a record-breaking \$2.4 million, helping to transform healthcare through the

Bob Bové Neuroscience Institute at HonorHealth; HonorHealth Cardiovascular Centers of Excellence; HonorHealth Research and Innovation Institute—Cancer Research and, the newly formed Ellen and Howard Katz Family Patient Assistance Endowment.

In recognition of his legacy of leadership and philanthropic commitment, HonorHealth Foundation was pleased to recognize Howard C. Katz as The Honor Ball 2021 Honoree. His tribute to the 250 frontline healthcare workers in attendance was a moment no one will soon forget.

## SAVE THE DATE

**The Honor Ball**  
**Saturday, February 25, 2023**  
**JW Marriott Camelback Inn**



## HonorHealth Pro-Am

A full field of golfers joined HonorHealth Foundation for our annual Pro-Am last April at Grayhawk Golf Club. Participants raised \$447,470 to benefit HonorHealth Desert Mission and the Military Partnership programs that will benefit thousands of patients, families and neighbors.

With the leadership of co-chairs Patrick Fate and Brett Gaboury, the Pro-Am remains one of the leading charitable golf tournaments in our community.



## NICU High Tea

Under the leadership of founder Stacy Lovell and event chair Mitzie Warner, the NICU High Tea, held on September 23rd, brought awareness and advanced care for babies who are born prematurely and in need of special medical attention.

Proceeds topped \$230,000 to benefit the HonorHealth Scottsdale Shea Medical Center Level III NICU, where the most fragile newborns receive the treatment they must have to survive and go on to thrive.

Through the generosity of more than 340 attendees, HonorHealth was able to purchase retractable screens separating each area in a NICU pod. The screens give families additional privacy and can be cleaned and sanitized on a regular basis.

**1 in 10 babies born each day are born premature**

**Nearly 400 babies are admitted to the NICU at Shea each year**

**On an average day there are 24 or more babies in the unit, with an average length of stay of 25 days**

**In 2021 the NICU has had 3 sets of triplets, 1 set of quads and tons of twins**

## SAVE THE DATE

**2022 NICU High Tea**  
**Thursday, September 22, 2022**  
**The Arizona Biltmore**



## Every Voice Matters

**Co-chairs | Debbie Allford, Sally Harris**

The ongoing COVID pandemic forced Night of Gold online again in 2021 but guests gathered in small groups at home and responded generously to the livestream program that served as the primary fundraising event for HonorHealth Desert Mission.

Voices from throughout the community shared music, spoken word performance and stories of personal impact.

Proceeds, which topped \$357,576, helped Desert Mission serve the needs of the most vulnerable members of our community.

**SAVE THE DATE** for the inaugural  
**Desert Mission Breakfast**  
**Thursday, October 27, 2022**  
**Arizona Biltmore**



# 2021 FINANCIAL *highlights*

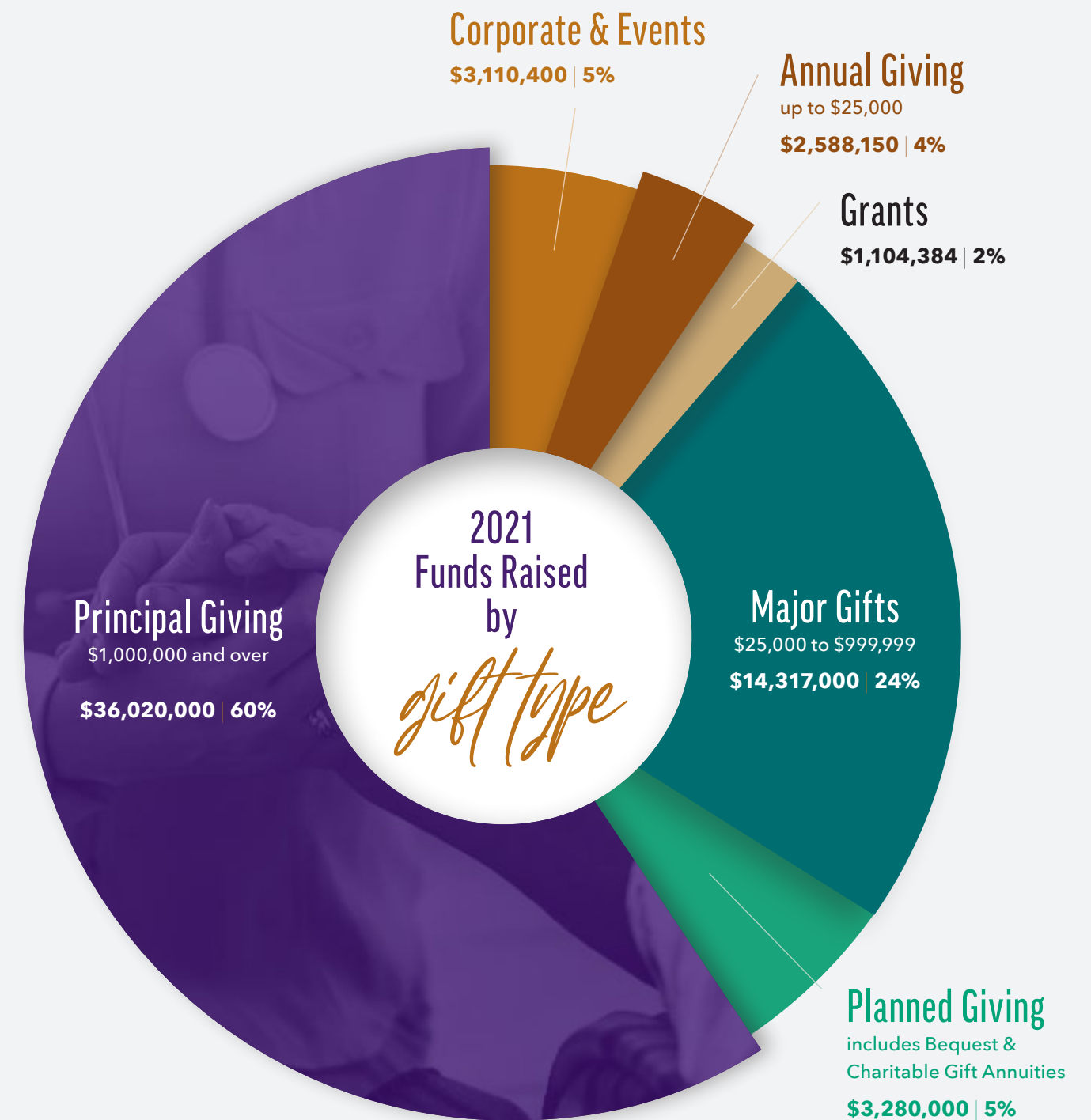
For a third consecutive year, HonorHealth Foundation increased philanthropic revenue, raising **\$60.4 million**.

As a locally governed, nonprofit community health system, HonorHealth exists to improve the health and well-being of those it serves. HonorHealth Foundation supports this mission through the generosity of donors, who give from their hearts in a wide variety of ways to improve access to expert care, make essential services available and drive healthcare transformation.

## 2021 REVENUE



TOTAL REVENUE  
**\$60,419,934**



## Investment Activity by Fund

for the twelve months ending December 31, 2021

Endowment	\$186,682,288	58%
Restricted	\$57,935,883	18%
Unrestricted	\$77,247,843	23%

TOTAL INVESTMENTS **\$321,866,014**



## A Message from the HonorHealth CEO

Your generosity to HonorHealth has touched the lives of thousands of patients and community members. As you well know, the need for exceptional, personalized care doesn't stop, even for a pandemic.

Your gifts in 2021 helped drive innovation that offers patients new treatment options and expanded services that honor the needs of each individual. You helped sustain frontline healthcare workers through another challenging year.

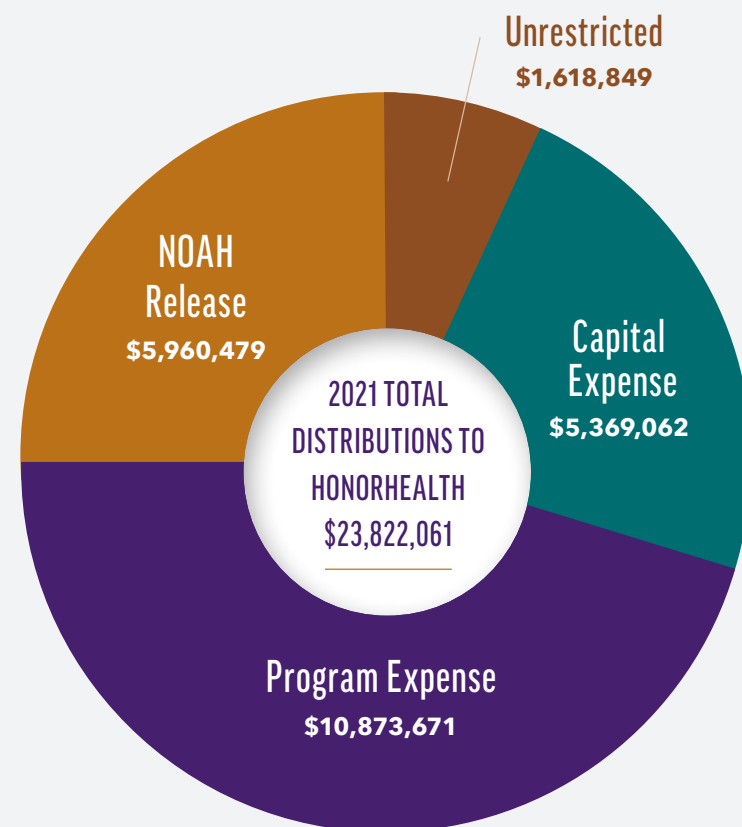
Much of what HonorHealth will become in the future is dependent upon philanthropy. Our vision is only possible through the generosity of our wonderful community.

On behalf of all of us at HonorHealth, Thank you!

**Todd LaPorte**  
CEO, HonorHealth

## GENEROSITY IN ACTION

Every dollar raised through HonorHealth Foundation goes to expand medical programs, acquire modern technology, meet the needs of vulnerable neighbors, support our front-line caregivers and serve our community with excellence.



### SAMPLE PROGRAMS SUPPORTED THROUGH PHILANTHROPY

Staff Education	\$1.30M
Cancer Care	\$1.08M
Cardiodiagnostic Equipment	\$1.00M
Research & Innovation Institute	\$3.30M
Desert Mission	\$1.25M
Germ-zapping Robots	\$280,000

(2021)



**“Trust is the most important currency of philanthropic organizations. Our transparency with these certifying organizations helps donors feel confident that their gifts will be used efficiently and effectively to advance health and well-being at HonorHealth.”**

**—JARED A. LANGKILDE, MBA, CFRE**  
President & CEO, HonorHealth Foundation





**HONORHEALTH®** Foundation

8125 North Hayden Road | Scottsdale, AZ 85258 | 480-587-5000 | [HonorHealthFoundation.org](https://HonorHealthFoundation.org)